

## Product datasheet for **AM06285SU-N**

### **ER81 (ETV1) Mouse Monoclonal Antibody [Clone ID: 1C8B6]**

#### **Product data:**

Product Type:	Primary Antibodies
Clone Name:	1C8B6
Applications:	WB
Recommended Dilution:	<b>ELISA:</b> 1/10000. <b>Western Blotting:</b> 1/500 - 1/2000.
Reactivity:	Human
Host:	Mouse
Isotype:	IgG1
Clonality:	Monoclonal
Immunogen:	Purified recombinant fragment of ETV1 (aa1-191) expressed in E. Coli.
Specificity:	Recognizes ETV1 (Ets variant gene 1).
Formulation:	State: Ascites State: Ascitic fluid containing 0.03% Sodium Azide.
Conjugation:	Unconjugated
Storage:	Store the antibody undiluted at 2-8°C for one month or (in aliquots) at -20°C for longer. Avoid repeated freezing and thawing.
Stability:	Shelf life: one year from despatch.
Gene Name:	ETS variant 1
Database Link:	<a href="#">Entrez Gene 2115 Human</a> <a href="#">P50549</a>



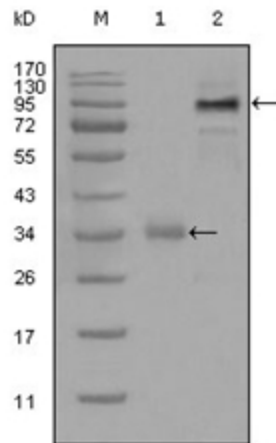
[View online »](#)

**Background:**

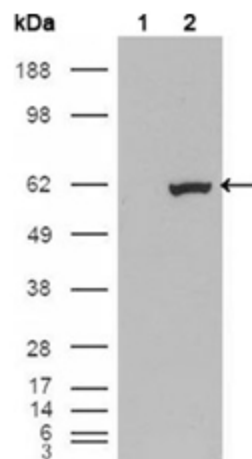
Several members of the Ets gene family encode sequence-specific DNA binding proteins that recognize DNA sequences with a centrally located 5'-GGAA-3' element. All of the Ets proteins recognize the same central core sequence but each protein interacts with unique sequences that flank this core. ER81 (also designated ETV1) binds the motif 5'-CGGAA/T-3'. ER81 is highly expressed in brain, testis, lung and heart. ER81 is also moderately expressed in spleen, pancreas, colon and small intestine. During development, ER81 displays a unique expression patterns which suggests that this transcriptional factor might play an important role in organogenesis. ERK-1 activates ER81 transcriptional activity while MAPKAP kinase 2 inhibits ER81.

**Synonyms:**

ETS translocation variant 1, Ets-related protein 81

**Product images:**


Western blot analysis using ETV1 antibody Cat.-No AM06285SU-N against truncated Trx-ETV1 recombinant protein (Lane 1) and full-length ETV1 (aa1-477)-hlgGfc transfected CHO-K1 cell lysate (Lane 2).



Western blot analysis using ETV1 antibody Cat.-No AM06285SU-N against HEK293T cells transfected with the pCMV6-ENTRY control (Lane 1) and pCMV6-ENTRY ETV1 cDNA (Lane 2).