

Product datasheet for **AM06284SU-N**

Cytokeratin 8 (KRT8) Mouse Monoclonal Antibody [Clone ID: 8A5D12]

Product data:

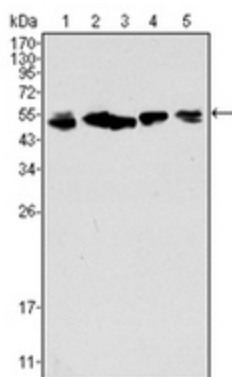
Product Type:	Primary Antibodies
Clone Name:	8A5D12
Applications:	ELISA, IF, IHC, WB
Recommended Dilution:	ELISA: 1/10000. Western Blot: 1/500 - 1/2000. Immunofluorescence: 1/200 - 1/1000. Immunohistochemistry on Paraffin Sections: 1/200 - 1/1000.
Reactivity:	Human
Host:	Mouse
Isotype:	IgG1
Clonality:	Monoclonal
Immunogen:	Purified recombinant fragment of Human Cytokeratin (aa391-483) expressed in E. Coli.
Specificity:	Recognizes Cytokeratin 8
Formulation:	State: Ascites State: Ascitic fluid containing 0.03% Sodium Azide.
Conjugation:	Unconjugated
Storage:	Store the antibody undiluted at 2-8°C for one month or (in aliquots) at -20°C for longer. Avoid repeated freezing and thawing.
Stability:	Shelf life: one year from despatch.
Gene Name:	keratin 8
Database Link:	Entrez Gene 3856 Human P05787
Background:	Cytokeratin 8, also known as CK8, KRT8, K8 is a member of the type II keratin family. Type I and type II keratins heteropolymerize to form intermediate-sized filaments in the cytoplasm of epithelial cells. It typically dimerizes with keratin 18 to form an intermediate filament in simple single-layered epithelial cells. This protein plays a role in maintaining cellular structural integrity and also functions in signal transduction and cellular differentiation. Mutations in this gene cause cryptogenic cirrhosis.



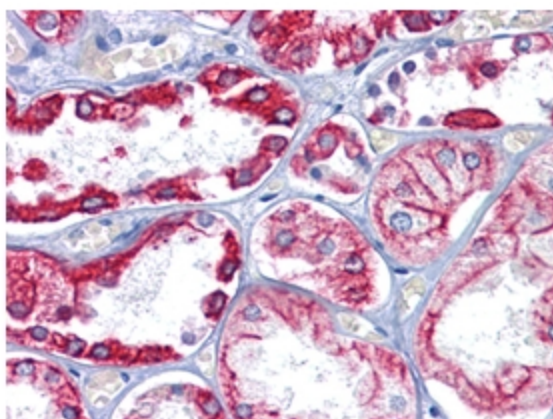
[View online »](#)

Synonyms: KRT8, CYK8, Cytokeratin-8, CK8, Keratin-8, K8, Cytokeratin endo A

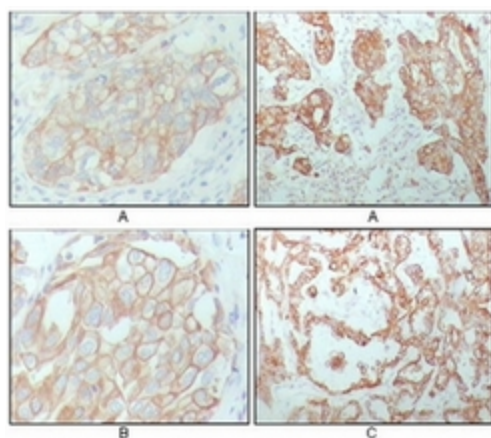
Product images:



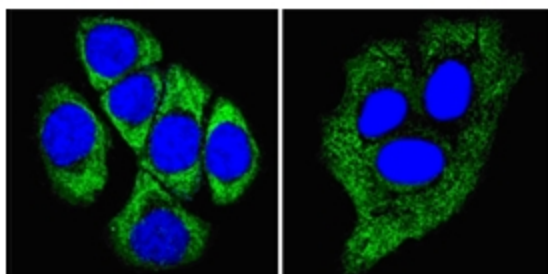
Western blot analysis using Cytokeratin 8 antibody Cat.-No AM06284SU-N against A549 (1), Hela (2), MCF-7 (3), A431 (4) and HepG2 (5) cell lysate.



Immunohistochemical analysis of paraffin-embedded human Kidney tissues using Cytokeratin 8 antibody Cat.-No AM06284SU-N



Immunohistochemical analysis of paraffin-embedded human breast carcinoma (A), lung cancer (B) and ovarian cancer tissue (C), showing membrane and cytoplasmic localization with DAB staining using Cytokeratin 8 antibody Cat.-No AM06284SU-N



Confocal Immunofluorescence analysis of methanol-fixed ECA109 cells (left) and HepG2 cells (right) using Cytokeratin 8 antibody Cat.-No AM06284SU-N (green), showing cytoplasmic localization. Blue: DRAQ5 fluorescent DNA dye.