

Product datasheet for **AM06282SU-N**

Cytokeratin 18 (KRT18) Mouse Monoclonal Antibody [Clone ID: 4D11E4]

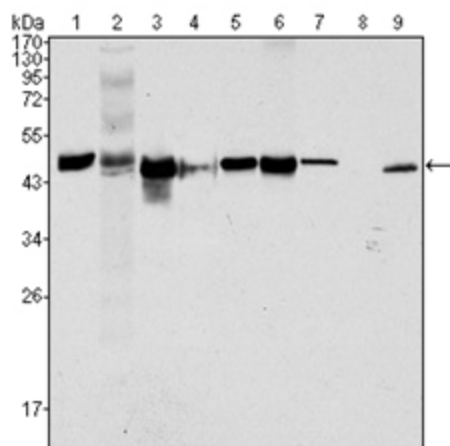
Product data:

Product Type:	Primary Antibodies
Clone Name:	4D11E4
Applications:	IHC, WB
Recommended Dilution:	ELISA: 1/10000. Western Blot: 1/500 - 1/2000. Immunohistochemistry on Paraffin Sections: 1/200 - 1/1000.
Reactivity:	Human
Host:	Mouse
Isotype:	IgG2b
Clonality:	Monoclonal
Immunogen:	Purified recombinant fragment of human Cytokeratin 18 (aa391-483) expressed in E. Coli.
Specificity:	Recognizes Cytokeratin-18
Formulation:	State: Ascites State: Ascitic fluid containing 0.03% Sodium Azide.
Conjugation:	Unconjugated
Storage:	Store the antibody undiluted at 2-8°C for one month or (in aliquots) at -20°C for longer. Avoid repeated freezing and thawing.
Stability:	Shelf life: one year from despatch.
Gene Name:	keratin 18
Database Link:	Entrez Gene 3875 Human P05783
Background:	Cytokeratin 18, also known as CK18, CYK18, KRT18. Entrez Protein NP_000215. It encodes the type I intermediate filament chain keratin 18. Keratin 18, together with its filament partner keratin 8, are perhaps the most commonly found members of the intermediate filament gene family. They are expressed in single layer epithelial tissues of the body. Mutations in this gene have been linked to cryptogenic cirrhosis. Two transcript variants encoding the same protein have been found for this gene.
Synonyms:	Cytokeratin-18, CK18, Keratin-18, Keratin 18, KRT18, CYK18, K18

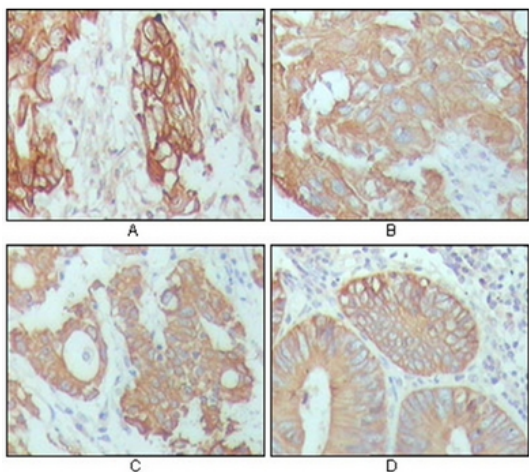


[View online »](#)

Product images:



Western blot analysis using Cytokeratin 18 antibody Cat.-No AM06282SU-N against Hela (Lane 1), NIH/3T3 (Lane 2), A549 (Lane 3), Jurkat (Lane 4), MCF-7 (Lane 5), HepG2 (Lane 6), A431 (Lane 7), HEK293 (Lane 8) and K562 (Lane 9) cell lysate.



Immunohistochemical analysis of paraffin-embedded human breast carcinoma (A), hepatocarcinoma (B), stomach cancer (C) and colon cancer tissue (D), showing cytoplasmic location with DAB staining using Cytokeratin 18 antibody Cat.-No AM06282SU-N.