

## Product datasheet for **AM06277PU-N**

### Lin28 (LIN28A) Mouse Monoclonal Antibody [Clone ID: 6D1F9]

#### Product data:

Product Type:	Primary Antibodies
Clone Name:	6D1F9
Applications:	ELISA, IF, WB
Recommended Dilution:	<b>ELISA:</b> 1/10000. <b>Western Blotting:</b> 1/500 - 1/2000. <b>Immunofluorescence:</b> 1/200 - 1/1000. <b>Immunohistochemistry on Paraffin Sections:</b> 1/200 - 1/1000.
Reactivity:	Human
Host:	Mouse
Isotype:	IgG1
Clonality:	Monoclonal
Immunogen:	Purified recombinant fragment of LIN28 (aa93-209) expressed in E. Coli.
Specificity:	Recognizes LIN28
Formulation:	0.01M Phosphate buffer, pH 7.4 State: Aff - Purified State: Liquid purified IgG fraction Preservative: 0.03% Sodium Azide
Purification:	Affinity Chromatography on Protein G
Conjugation:	Unconjugated
Storage:	Store the antibody undiluted at 2-8°C for one month or (in aliquots) at -20°C for longer. Avoid repeated freezing and thawing.
Stability:	Shelf life: one year from despatch.
Gene Name:	lin-28 homolog A
Database Link:	<a href="#">Entrez Gene 79727 Human Q9H9Z2</a>



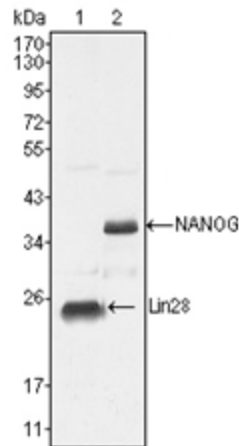
[View online »](#)

**Background:**

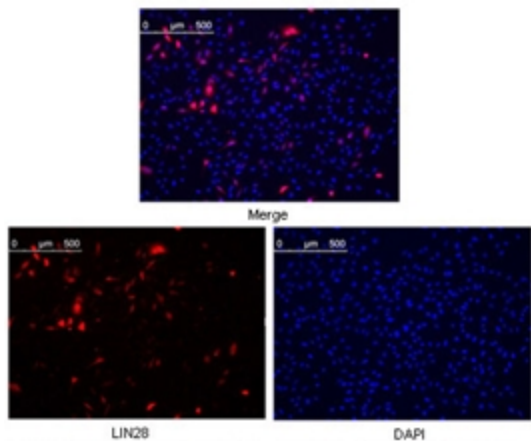
Lin-28 homolog (*C. elegans*), also known as LIN28, CSDD1, ZCCHC1 (NP\_078950) was first discovered in the nematode *C. elegans*. It is a heterochronic protein in *C. elegans* involved in the timing of developmental events and choice of stage specific cell fates. LIN28 expression has been found to be regulated post-transcriptionally by miRNAs in both nematodes and mammals. In humans it is expressed in embryonic stem cells and its expression decreases during differentiation. It is negatively regulated by retinoic acid in neuronal differentiation.

**Synonyms:**

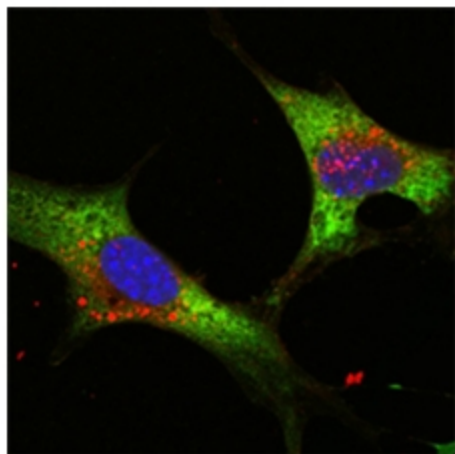
LIN-28, LIN28A, CSDD1, ZCCHC1

**Product images:**


Western blot analysis using LIN28 antibody Cat.-No AM06277PU-N against NTERA-2 cell lysate (Lane 1).



Confocal Immunofluorescence analysis of methanol fixed HeLa cells were transfected with pMX construct of Human LIN28, cells were analyzed ~62 hours after transfection.



Confocal immunofluorescence analysis of NTERA-2 cells using LIN28 antibody Cat.-No AM06277PU-N (green). Blue: DRAQ5 fluorescent DNA dye.