

Product datasheet for **AM06265SU-N**

E7 Mouse Monoclonal Antibody [Clone ID: 3D6F1]

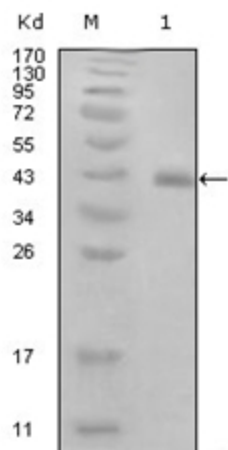
Product data:

Product Type:	Primary Antibodies
Clone Name:	3D6F1
Applications:	WB
Recommended Dilution:	ELISA: 1/10000. Western Blot: 1/500 - 1/2000.
Reactivity:	Human Papilloma Virus 16
Host:	Mouse
Isotype:	IgG1
Clonality:	Monoclonal
Immunogen:	Purified recombinant fragment of E7 expressed in E. Coli.
Specificity:	Recognizes HPV16 E7 (Human papillomavirus type 16 E7).
Formulation:	State: Ascites State: Ascitic fluid containing 0.03% Sodium Azide.
Conjugation:	Unconjugated
Storage:	Store the antibody undiluted at 2-8°C for one month or (in aliquots) at -20°C for longer. Avoid repeated freezing and thawing.
Stability:	Shelf life: one year from despatch.
Database Link:	P03129
Background:	E7 transforming protein (Human papillomavirus type 16) has both transforming and trans-activating activities. Disrupts the function of host retinoblastoma protein RB1/pRb, which is a key regulator of the cell cycle. Induces the disassembly of the E2F1 transcription factors from RB1, with subsequent transcriptional activation of E2F1-regulated S-phase genes. Inactivation of the ability of RB1 to arrest the cell cycle is critical for cellular transformation, uncontrolled cellular growth and proliferation induced by viral infection. Stimulation of progression from G1 to S phase allows the virus to efficiently use the cellular DNA replicating machinery to achieve viral genome replication. Interferes with histone deacetylation mediated by HDAC1 and HDAC2, leading to activation of transcript.
Synonyms:	Human Papilloma Virus Early protein 7



[View online »](#)

Product images:



Western blot analysis using E7 mouse mAb against truncated GST-E7 recombinant protein (1).