

## Product datasheet for **AM06263SU-N**

### **ErbB 3 (ERBB3) Mouse Monoclonal Antibody [Clone ID: 3F10F6]**

#### **Product data:**

Product Type:	Primary Antibodies
Clone Name:	3F10F6
Applications:	IHC, WB
Recommended Dilution:	<b>ELISA:</b> 1/10000. <b>Western Blotting:</b> 1/500 - 1/2000. <b>Immunohistochemistry on Paraffin Sections:</b> 1/200 - 1/1000.
Reactivity:	Human
Host:	Mouse
Isotype:	IgG1
Clonality:	Monoclonal
Immunogen:	Purified recombinant fragment of ERBB3 (aa1175-1275) expressed in E. Coli.
Specificity:	Recognizes ERBB3
Formulation:	State: Ascites State: Ascitic fluid containing 0.03% Sodium Azide.
Conjugation:	Unconjugated
Storage:	Store the antibody undiluted at 2-8°C for one month or (in aliquots) at -20°C for longer. Avoid repeated freezing and thawing.
Stability:	Shelf life: one year from despatch.
Gene Name:	erb-b2 receptor tyrosine kinase 3
Database Link:	<a href="#">Entrez Gene 2065 Human P21860</a>



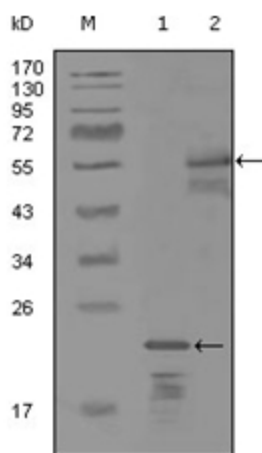
[View online »](#)

**Background:**

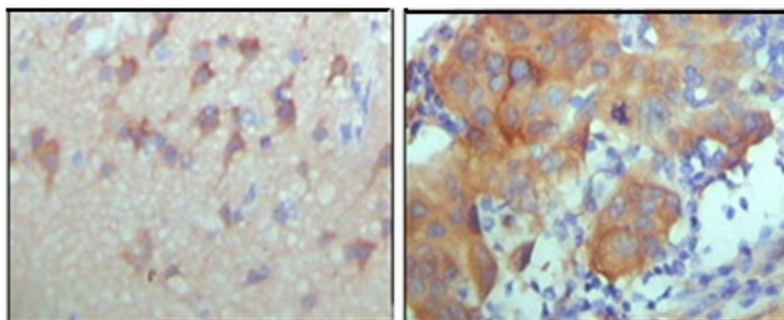
This gene encodes a member of the epidermal growth factor receptor (EGFR) family of receptor tyrosine kinases. This membrane-bound protein has a neuregulin binding domain but not an active kinase domain. It therefore can bind this ligand but not convey the signal into the cell through protein phosphorylation. However, it does form heterodimers with other EGF receptor family members which do have kinase activity. Heterodimerization leads to the activation of pathways which lead to cell proliferation or differentiation. Amplification of this gene and/or overexpression of its protein have been reported in numerous cancers, including prostate, bladder, and breast tumors. Alternate transcriptional splice variants encoding different isoforms have been characterized. One isoform lacks the intermembrane region and is secreted outside the cell. This form acts to modulate the activity of the membrane-bound form. Additional splice variants have also been reported, but they have not been thoroughly characterized.

**Synonyms:**

ERBB-3, c-erbB-3, HER-3

**Product images:**


Western blot analysis using ERBB3 antibody Cat.-No AM06263SU-N against truncated Trx-ERBB3 recombinant protein (Lane 1) and MBP-ERBB3 (aa1175-1275) recombinant protein (Lane 2).



Immunohistochemical analysis of paraffin-embedded human cerebra (left) and breast carcinoma tissue (right), showing cytoplasmic and membrane location with DAB staining using ERBB3 antibody Cat.-No AM06263SU-N