

## Product datasheet for **AM06262SU-N**

### **HAND1 Mouse Monoclonal Antibody [Clone ID: 8E7A11]**

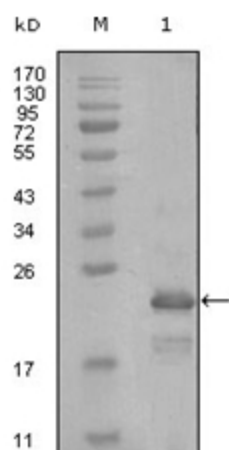
#### **Product data:**

Product Type:	Primary Antibodies
Clone Name:	8E7A11
Applications:	ELISA, WB
Recommended Dilution:	<b>ELISA:</b> 1/10000. <b>Western Blot:</b> 1/500 - 1/2000.
Reactivity:	Human
Host:	Mouse
Isotype:	IgG1
Clonality:	Monoclonal
Immunogen:	Purified recombinant fragment of HAND1 (aa90-190) expressed in E. Coli.
Specificity:	Recognizes Heart and neural crest derivatives expressed 1 (HAND1).
Formulation:	State: Ascites State: Ascitic fluid containing 0.03% Sodium Azide.
Conjugation:	Unconjugated
Storage:	Store the antibody undiluted at 2-8°C for one month or (in aliquots) at -20°C for longer. Avoid repeated freezing and thawing.
Stability:	Shelf life: one year from despatch.
Gene Name:	heart and neural crest derivatives expressed 1
Database Link:	<a href="#">Entrez Gene 9421 Human</a> <a href="#">O96004</a>
Background:	The protein encoded by this gene belongs to the basic helix-loop-helix family of transcription factors. This gene product is one of two closely related family members, the HAND proteins, which are asymmetrically expressed in the developing ventricular chambers and play an essential role in cardiac morphogenesis. Working in a complementary fashion, they function in the formation of the right ventricle and aortic arch arteries, implicating them as mediators of congenital heart disease. In addition, it has been suggested that this transcription factor may be required for early trophoblast differentiation.
Synonyms:	BHLHA27



[View online »](#)

## Product images:



Western blot analysis using HAND1 antibody Cat.-No AM06262SU-N against truncated Trx-HAND1 recombinant protein (Lane 1).