

## Product datasheet for **AM06261SU-N**

### Eph receptor A4 (EPHA4) Mouse Monoclonal Antibody [Clone ID: 6C1B6]

#### Product data:

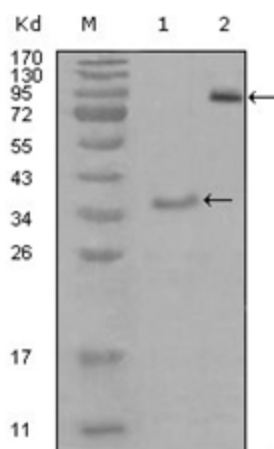
Product Type:	Primary Antibodies
Clone Name:	6C1B6
Applications:	WB
Recommended Dilution:	<b>ELISA:</b> 1/10000. <b>Western Blot:</b> 1/500 - 1/2000.
Reactivity:	Human
Host:	Mouse
Isotype:	IgG2b
Clonality:	Monoclonal
Immunogen:	Purified recombinant fragment of EphA3 (aa751-983) expressed in E. Coli.
Specificity:	Recognizes EPH receptor A3 (EphA3).
Formulation:	State: Ascites State: Ascitic fluid containing 0.03% Sodium Azide.
Conjugation:	Unconjugated
Storage:	Store the antibody undiluted at 2-8°C for one month or (in aliquots) at -20°C for longer. Avoid repeated freezing and thawing.
Stability:	Shelf life: one year from despatch.
Gene Name:	EPH receptor A4
Database Link:	<a href="#">Entrez Gene 2043 Human P54764</a>
Background:	This gene belongs to the ephrin receptor subfamily of the protein-tyrosine kinase family. EPH and EPH-related receptors have been implicated in mediating developmental events, particularly in the nervous system. Receptors in the EPH subfamily typically have a single kinase domain and an extracellular region containing a Cys-rich domain and 2 fibronectin type III repeats. The ephrin receptors are divided into 2 groups based on the similarity of their extracellular domain sequences and their affinities for binding ephrin-A and ephrin-B ligands. This gene encodes a protein that binds ephrin-A ligands. Two alternatively spliced transcript variants have been described for this gene.



[View online »](#)

Synonyms: HEK8, SEK, TYRO1, Ephrin type-A receptor 4

### Product images:



Western blot analysis using EphA3 antibody Cat.-No AM06261SU-N against truncated Trx-EphA3 recombinant protein (Lane 1) and truncated EphA3 (aa566-983)-hIgGFc transfected CHO-K1 cell lysate (Lane 2).