

Product datasheet for **AM06256SU-N**

c Abl (ABL1) Mouse Monoclonal Antibody [Clone ID: 7B11D6]

Product data:

Product Type:	Primary Antibodies
Clone Name:	7B11D6
Applications:	ELISA, WB
Recommended Dilution:	ELISA: 1/10000. Western Blot: 1/500 - 1/2000.
Reactivity:	Human
Host:	Mouse
Isotype:	IgG1
Clonality:	Monoclonal
Immunogen:	Purified recombinant fragment of ABL1 (aa577-650) expressed in E. Coli.
Specificity:	Recognizes ABL1
Formulation:	State: Ascites State: Ascitic fluid containing 0.03% Sodium Azide.
Conjugation:	Unconjugated
Storage:	Store the antibody undiluted at 2-8°C for one month or (in aliquots) at -20°C for longer. Avoid repeated freezing and thawing.
Stability:	Shelf life: one year from despatch.
Gene Name:	ABL proto-oncogene 1, non-receptor tyrosine kinase
Database Link:	Entrez Gene 25 Human P00519



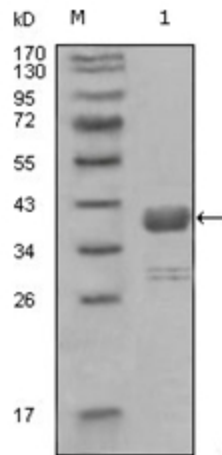
[View online »](#)

Background:

The ABL1 protooncogene encodes a cytoplasmic and nuclear protein tyrosine kinase that has been implicated in processes of cell differentiation, cell division, cell adhesion, and stress response. Activity of c-Abl protein is negatively regulated by its SH3 domain, and deletion of the SH3 domain turns ABL1 into an oncogene. The t(9;22) translocation results in the head-to-tail fusion of the BCR (MIM:151410) and ABL1 genes present in many cases of chronic myelogenous leukemia. The DNA-binding activity of the ubiquitously expressed ABL1 tyrosine kinase is regulated by CDC2-mediated phosphorylation, suggesting a cell cycle function for ABL1. The ABL1 gene is expressed as either a 6- or 7-kb mRNA transcript, with alternatively spliced first exons spliced to the common exons 2-11.

Synonyms:

c-ABL, p150, JTK7, bcr/abl

Product images:

Western blot analysis using ABL1 antibody Cat.-No AM06256SU-N against truncated GST-ABL1 recombinant protein (1).