

Product datasheet for **AM06254SU-N**

PARL Mouse Monoclonal Antibody [Clone ID: 8C4B2]

Product data:

Product Type:	Primary Antibodies
Clone Name:	8C4B2
Applications:	ELISA, WB
Recommended Dilution:	ELISA: 1/10000. Western Blot: 1/500 - 1/2000.
Reactivity:	Human
Host:	Mouse
Isotype:	IgG2b
Clonality:	Monoclonal
Immunogen:	Purified recombinant fragment of PARL (aa112-167) expressed in E. Coli.
Specificity:	Recognizes PARL (presenilin associated, rhomboid-like).
Formulation:	State: Ascites State: Ascitic fluid containing 0.03% Sodium Azide.
Conjugation:	Unconjugated
Storage:	Store the antibody undiluted at 2-8°C for one month or (in aliquots) at -20°C for longer. Avoid repeated freezing and thawing.
Stability:	Shelf life: one year from despatch.
Gene Name:	presenilin associated rhomboid like
Database Link:	Entrez Gene 55486 Human Q9H300

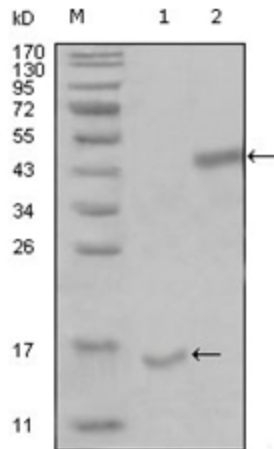


Background:

This gene encodes a mitochondrial integral membrane protein. Following proteolytic processing of this protein, a small peptide (P-beta) is formed and translocated to the nucleus. This gene may be involved in signal transduction via regulated intramembrane proteolysis of membrane-tethered precursor proteins. Variation in this gene has been associated with increased risk for type 2 diabetes. Alternative splicing results in multiple transcript variants encoding different isoforms.

Synonyms:

PSARL, PRO2207

Product images:

Western blot analysis using PARL antibody Cat.-No AM06254SU-N against truncated Trx-PARL recombinant protein (Lane 1) and truncated MBP-PARL (aa112-167) recombinant protein (Lane 2).