

Product datasheet for **AM06252SU-N**

Lysyl tRNA synthetase (KARS) Mouse Monoclonal Antibody [Clone ID: 8G12C1]

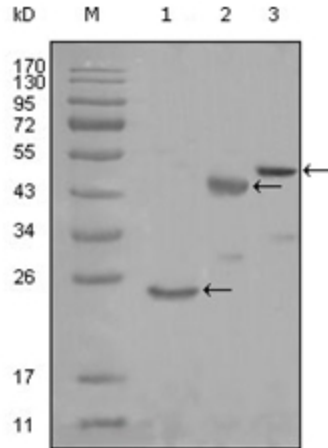
Product data:

Product Type:	Primary Antibodies
Clone Name:	8G12C1
Applications:	IHC, WB
Recommended Dilution:	ELISA: 1/10000. Western blot: 1/500 - 1/2000. Immunohistochemistry on Paraffin Sections: 1/200-1/1000.
Reactivity:	Human
Host:	Mouse
Isotype:	IgG1
Clonality:	Monoclonal
Immunogen:	Purified recombinant fragment of KARS(aa90-174) expressed in E. Coli.
Specificity:	Recognizes Lysyl Trna Synthetase (KARS).
Formulation:	State: Ascites State: Ascitic fluid containing 0.03% Sodium Azide.
Conjugation:	Unconjugated
Storage:	Store the antibody undiluted at 2-8°C for one month or (in aliquots) at -20°C for longer. Avoid repeated freezing and thawing.
Stability:	Shelf life: one year from despatch.
Gene Name:	lysyl-tRNA synthetase
Database Link:	Entrez Gene 3735 Human Q15046
Background:	Aminoacyl-tRNA synthetases are a class of enzymes that charge tRNAs with their cognate amino acids. Lysyl-tRNA synthetase is a homodimer localized to the cytoplasm which belongs to the class II family of tRNA synthetases. It has been shown to be a target of autoantibodies in the human autoimmune diseases, polymyositis or dermatomyositis.
Synonyms:	Lysyl-tRNA synthetase, KIAA0070, LysRS, Lysine-tRNA ligase

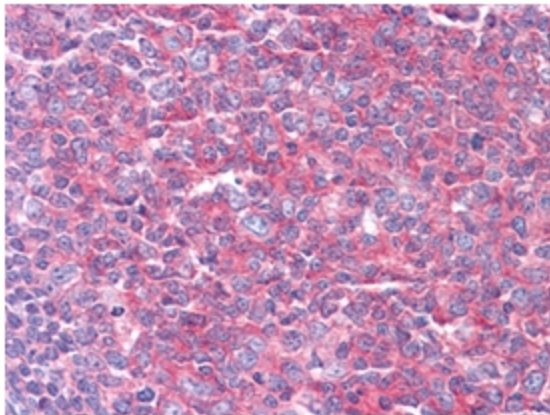


[View online »](#)

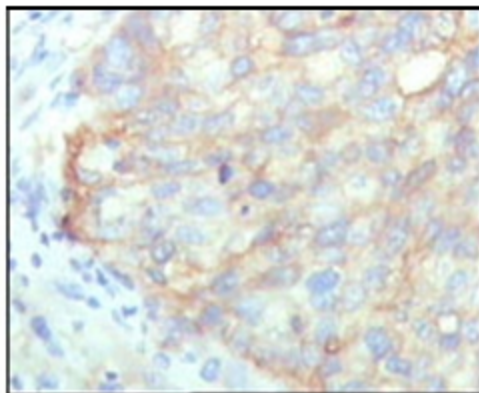
Product images:



Western blot analysis using KARS antibody Cat.-No AM06252SU-N against truncated Trx-KARS recombinant protein (Lane 1), truncated MBP-KARS (aa90-174) and full length KARS (aa1-188) transfected CHO-K1 cell lysate (Lane 3).



Immunohistochemical analysis of paraffin-embedded human Tonsil tissues using KARS antibody Cat.-No AM06252SU-N



Immunohistochemical analysis of paraffin-embedded human cervical carcinoma, showing cytoplasmic localization with DAB staining using KARS antibody Cat.-No AM06252SU-N