

Product datasheet for **AM06250SU-N**

Pea3 (ETV4) Mouse Monoclonal Antibody [Clone ID: 1A2G3]

Product data:

Product Type:	Primary Antibodies
Clone Name:	1A2G3
Applications:	WB
Recommended Dilution:	ELISA: 1/10000. Western Blot: 1/500 - 1/2000.
Reactivity:	Human
Host:	Mouse
Isotype:	IgG1
Clonality:	Monoclonal
Immunogen:	Purified recombinant fragment of human ETV4 (aa50-109) expressed in E. Coli.
Specificity:	Recognizes ETV4
Formulation:	State: Ascites State: Ascitic fluid containing 0.03% Sodium Azide.
Conjugation:	Unconjugated
Storage:	Store the antibody undiluted at 2-8°C for one month or (in aliquots) at -20°C for longer. Avoid repeated freezing and thawing.
Stability:	Shelf life: one year from despatch.
Predicted Protein Size:	54 kDa
Gene Name:	ETS variant 4
Database Link:	Entrez Gene 2118 Human P43268



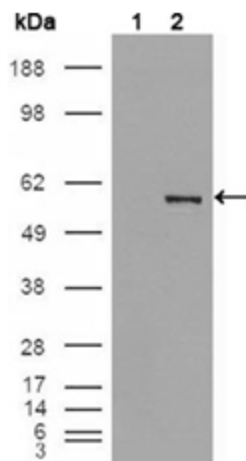
[View online »](#)

Background:

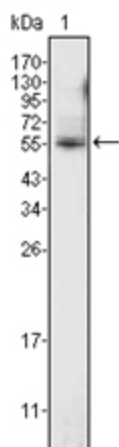
Ets variant gene 4 (E1A enhancer binding protein, E1AF), also known as PEA3. Several members of the Ets gene family are known to encode sequencespecific DNA binding proteins. These include mouse PU.1, mouse and human Ets-1, Drosophila E74, chicken and human Ets-2 and rat GABP- α . Each of these proteins recognizes similar motifs in DNA that share a centrally located 5'-GGAA-3' element. For instance, PEA3 binds the motif 5'-AGGAAG-3' (the PEA-3 motif), but does not bind to the sequence 5'-AGGAAC-3', recognized by PU.1, although PU.1 binds equally well to both sequences. It appears thatall of the Ets proteins recognize the same central core sequence but that each protein interacts with unique sequences that flank this core. PEA3 is expressed at readily detectable levels in cells of epithelial and fibroblastic origin but is not expressed in hematopoietic cells. This is in contrast to other members of the Ets gene family, such as Ets-1, Ets-2 and Fli-1, each of whichis expressed primarily in cells of hematopoietic origin.

Synonyms:

E1AF, E1A-F

Product images:

Western blot analysis using ETV4 antibody Cat.- No AM06250SU-N against HEK293T cells transfected with the pCMV6-ENTRY control (Lane 1) and pCMV6-ENTRY ETV4 cDNA (Lane 2).



Western blot analysis using ETV4 antibody Cat.-
No AM06250SU-N against K562 cell lysate (Lane
1).