

Product datasheet for **AM06247SU-N**

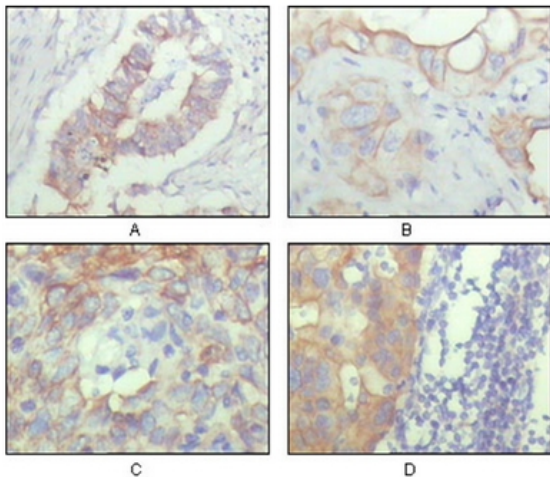
CD166 (ALCAM) Mouse Monoclonal Antibody [Clone ID: 10F1G12]

Product data:

Product Type:	Primary Antibodies
Clone Name:	10F1G12
Applications:	IHC
Recommended Dilution:	ELISA: 1/10000. Immunohistochemistry on Paraffin Sections: 1/200 - 1/1000.
Reactivity:	Human
Host:	Mouse
Isotype:	IgG1
Clonality:	Monoclonal
Immunogen:	Purified recombinant fragment of ALCAM (aa405-524) expressed in E. Coli.
Specificity:	Recognizes ALCAM/CD166
Formulation:	State: Ascites State: Ascitic fluid containing 0.03% Sodium Azide.
Conjugation:	Unconjugated
Storage:	Store the antibody undiluted at 2-8°C for one month or (in aliquots) at -20°C for longer. Avoid repeated freezing and thawing.
Stability:	Shelf life: one year from despatch.
Gene Name:	activated leukocyte cell adhesion molecule
Database Link:	Entrez Gene 214 Human Q13740
Background:	ALCAM (CD166): Activated leukocyte cell adhesion molecule. CD166 is a member of the Ig superfamily and is expressed on activated T-cells, B cells and other cells including thymic epithelial cells, fibroblasts, keratinocytes and neurons. CD6 has been identified as a receptor for CD166.
Synonyms:	ALCAM, MEMD, Activated leukocyte cell adhesion molecule



[View online »](#)

Product images:

Immunohistochemical analysis of paraffin-embedded human ovary carcinoma (A), kidney carcinoma (B), lung carcinoma (C) and breast carcinoma (D), showing cytoplasmic and membrane localization with DAB staining using ALCAM antibody Cat.-No AM06247SU-N.