

## Product datasheet for **AM06245SU-N**

### **GABPA Mouse Monoclonal Antibody [Clone ID: 8C1B10]**

#### **Product data:**

Product Type:	Primary Antibodies
Clone Name:	8C1B10
Applications:	ELISA, IF, WB
Recommended Dilution:	<b>ELISA:</b> 1/10000. <b>Western Blotting:</b> 1/500 - 1/2000. <b>Immunofluorescence:</b> 1/200 - 1/1000.
Reactivity:	Human, Mouse
Host:	Mouse
Isotype:	IgG1
Clonality:	Monoclonal
Immunogen:	Purified recombinant fragment of Human GABPA (aa120-190) expressed in E. Coli.
Specificity:	Recognizes GABPA
Formulation:	State: Ascites State: Ascitic fluid containing 0.03% Sodium Azide.
Conjugation:	Unconjugated
Storage:	Store the antibody undiluted at 2-8°C for one month or (in aliquots) at -20°C for longer. Avoid repeated freezing and thawing.
Stability:	Shelf life: one year from despatch.
Gene Name:	GA binding protein transcription factor alpha subunit
Database Link:	<a href="#">Entrez Gene 2551 Human Q06546</a>



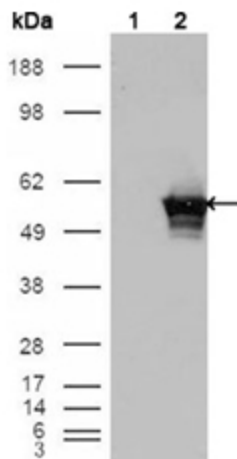
[View online »](#)

**Background:**

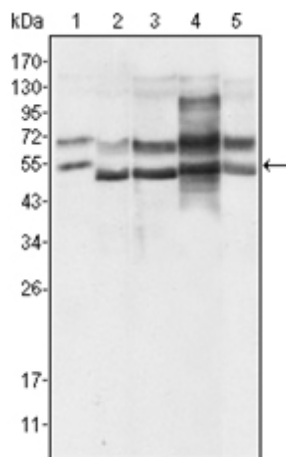
GA binding protein transcription factor, alpha subunit 60kDa. It is one of three GA-binding protein transcription factor subunits which functions as a DNA-binding subunit. Since this subunit shares identity with a subunit encoding the nuclear respiratory factor 2 gene, it is likely involved in activation of cytochrome oxidase expression and nuclear control of mitochondrial function. This subunit also shares identity with a subunit constituting the transcription factor E4TF1, responsible for expression of the adenovirus E4 gene. Because of its chromosomal localization and ability to form heterodimers with other polypeptides, it may play a role in the Down Syndrome phenotype.

**Synonyms:**

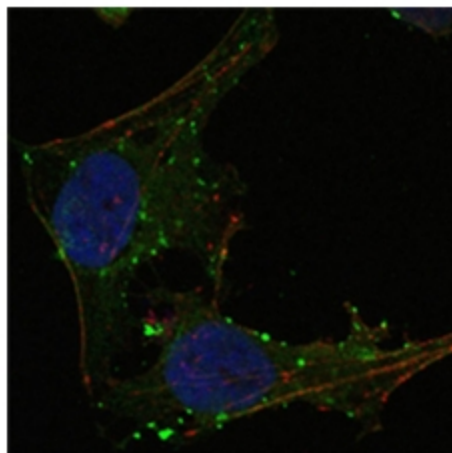
E4TF1A

**Product images:**


Western blot analysis using GABPA antibody Cat.-No AM06245SU-N against HEK293T cells transfected with the pCMV6-ENTRY control (Lane 1) and pCMV6-ENTRY GABPA cDNA (Lane 2).



Western blot analysis using GABPA antibody Cat.-No AM06245SU-N against HeLa (Lane 1), A549 (Lane 2), MCF-7 (Lane 3), NIH/3T3 (Lane 4) and SMMC-7721 (Lane 5) cell lysate.



Confocal immunofluorescence analysis of HeLa cells using GABPA antibody Cat.-No AM06245SU-N (green). Red: Actin filaments have been labeled using DY-554 phalloidin. Blue: DRAQ5 fluorescent DNA dye.