

Product datasheet for **AM06244SU-N**

Carbonic Anhydrase I (CA1) Mouse Monoclonal Antibody [Clone ID: 9D6D7]

Product data:

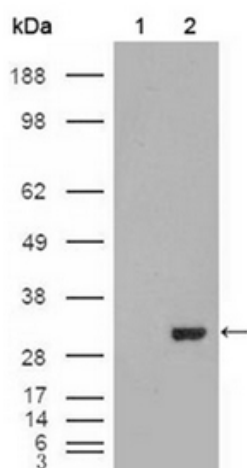
Product Type:	Primary Antibodies
Clone Name:	9D6D7
Applications:	WB
Recommended Dilution:	ELISA: 1/10000. Western Blotting: 1/500 - 1/2000.
Reactivity:	Human
Host:	Mouse
Isotype:	IgG1
Clonality:	Monoclonal
Immunogen:	Purified recombinant fragment of CA1 (aa25-90) expressed in E. Coli.
Specificity:	Recognizes Carbonic anhydrase 1 (CA1).
Formulation:	State: Ascites State: Ascitic fluid containing 0.03% Sodium Azide.
Conjugation:	Unconjugated
Storage:	Store the antibody undiluted at 2-8°C for one month or (in aliquots) at -20°C. Avoid repeated freezing and thawing.
Stability:	Shelf life: One year from despatch.
Gene Name:	carbonic anhydrase 1
Database Link:	Entrez Gene 759 Human P00915
Background:	Carbonic anhydrases (CAs) are a large family of zinc metalloenzymes that catalyze the reversible hydration of carbon dioxide. They participate in a variety of biological processes, including respiration, calcification, acid-base balance, bone resorption, and the formation of aqueous humor, cerebrospinal fluid, saliva, and gastric acid. They show extensive diversity in tissue distribution and in their subcellular localization. CA1 is closely linked to CA2 and CA3 genes on chromosome 8, and it encodes a cytosolic protein which is found at the highest level in erythrocytes. Transcript variants of CA1 utilizing alternative polyA_sites have been described in literature.



[View online »](#)

Synonyms: Carbonic anhydrase I, Carbonate dehydratase I, Carbonic anhydrase B, CA1, CAB, CA-I

Product images:



Western blot analysis using CA1 antibody Cat.-No AM06244SU-N against HEK293T cells transfected with the pCMV6-ENTRY control (Lane 1) and pCMV6-ENTRY CA1 cDNA (Lane 2).