

Product datasheet for **AM06240SU-N**

Eph receptor A4 (EPHA4) Mouse Monoclonal Antibody [Clone ID: 7D3D4]

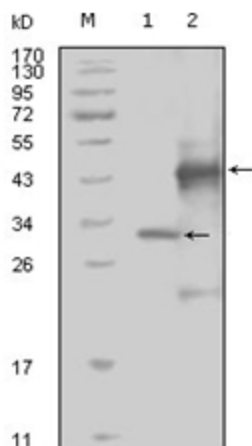
Product data:

Product Type:	Primary Antibodies
Clone Name:	7D3D4
Applications:	WB
Recommended Dilution:	ELISA: 1/10000. Western Blotting: 1/500 - 1/2000.
Reactivity:	Human
Host:	Mouse
Isotype:	IgG1
Clonality:	Monoclonal
Immunogen:	Purified recombinant fragment of EphA4 (aa777-986) expressed in E. Coli.
Specificity:	Recognizes EphA4 (EPH receptor A4).
Formulation:	State: Ascites State: Ascitic fluid containing 0.03% Sodium Azide.
Conjugation:	Unconjugated
Storage:	Store the antibody undiluted at 2-8°C for one month or (in aliquots) at -20°C for longer. Avoid repeated freezing and thawing.
Stability:	Shelf life: one year from despatch.
Gene Name:	EPH receptor A4
Database Link:	Entrez Gene 2043 Human P54764
Background:	This gene belongs to the ephrin receptor subfamily of the protein-tyrosine kinase family. EPH and EPH-related receptors have been implicated in mediating developmental events, particularly in the nervous system. Receptors in the EPH subfamily typically have a single kinase domain and an extracellular region containing a Cys-rich domain and 2 fibronectin type III repeats. The ephrin receptors are divided into 2 groups based on the similarity of their extracellular domain sequences and their affinities for binding ephrin-A and ephrin-B ligands.
Synonyms:	HEK8, SEK, TYRO1, Ephrin type-A receptor 4



[View online »](#)

Product images:



Western blot analysis using EphA4 mouse mAb against truncated Trx-EphA4 recombinant protein (1) and truncated GST-EphA4 (aa777-986) recombinant protein (2).