

Product datasheet for **AM06237SU-N**

CD166 (ALCAM) Mouse Monoclonal Antibody [Clone ID: 3F8B12]

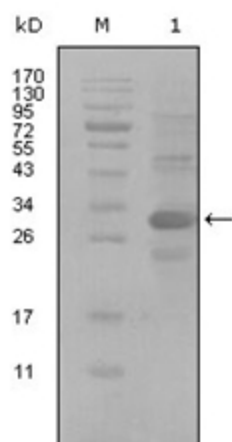
Product data:

| | |
|-----------------------|--|
| Product Type: | Primary Antibodies |
| Clone Name: | 3F8B12 |
| Applications: | WB |
| Recommended Dilution: | ELISA: 1/10000. Western Blotting: 1/500 - 1/2000. |
| Reactivity: | Human |
| Host: | Mouse |
| Isotype: | IgG2a |
| Clonality: | Monoclonal |
| Immunogen: | Purified recombinant fragment of ALCAM (aa405-524) expressed in E. Coli. |
| Specificity: | Recognizes ALCAM/CD166 |
| Formulation: | State: Ascites State: Ascitic fluid containing 0.03% Sodium Azide. |
| Conjugation: | Unconjugated |
| Storage: | Store the antibody undiluted at 2-8°C for one month or (in aliquots) at -20°C for longer. Avoid repeated freezing and thawing. |
| Stability: | Shelf life: one year from despatch. |
| Gene Name: | activated leukocyte cell adhesion molecule |
| Database Link: | Entrez Gene 214 Human Q13740 |
| Background: | CD166 is a member of the Ig superfamily and is expressed on activated T-cells, B cells and other cells including thymic epithelial cells, fibroblasts, keratinocytes and neurons. CD6 has been identified as a receptor for CD166. |
| Synonyms: | ALCAM, MEMD, Activated leukocyte cell adhesion molecule |



[View online »](#)

Product images:



Western blot analysis using ALCAM mouse mAb against truncated Trx-ALCAM recombinant protein (1).