

Product datasheet for **AM06234SU-N**

PAR4 (PAWR) Mouse Monoclonal Antibody [Clone ID: 3G9H7]

Product data:

Product Type:	Primary Antibodies
Clone Name:	3G9H7
Applications:	ELISA, IHC, WB
Recommended Dilution:	ELISA: 1/10000. Western Blot: 1/500 - 1/2000. Immunohistochemistry on Paraffin sections: 1/200 - 1/1000.
Reactivity:	Human
Host:	Mouse
Isotype:	IgG1
Clonality:	Monoclonal
Immunogen:	Purified recombinant fragment of PAR4 (aa1-330) expressed in E. Coli.
Specificity:	Recognizes PRKC Apoptosis WT1 Regulator (PAWR).
Formulation:	State: Ascites State: Ascitic fluid containing 0.03% Sodium Azide.
Conjugation:	Unconjugated
Storage:	Store the antibody undiluted at 2-8°C for one month or (in aliquots) at -20°C for longer. Avoid repeated freezing and thawing.
Stability:	Shelf life: one year from despatch.
Gene Name:	pro-apoptotic WT1 regulator
Database Link:	Entrez Gene 5074 Human Q96IZ0



[View online »](#)

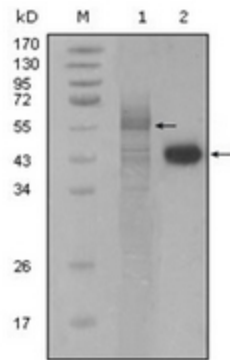
Background:

Prostate apoptosis response 4 (Par4) is a 38kD protein originally identified as the product of a gene that is upregulated in prostate tumor cells undergoing apoptosis. It is a leucine zipper and death domain containing protein whose levels increase in neurons undergoing apoptosis as a result of trophic factor withdrawal or exposure to oxidative and metabolic insults. Par4 levels are reported to be increased in their lumbar spinal cord specimens further suggesting a role in neuronal degeneration. The tumor suppressor WT1 represses and activates transcription. The loss and/or imbalance of the dual transcriptional activity of WT1 may contribute to Wilms tumor. Par4 is a WT1 interacting protein that also functions as a transcriptional repressor.

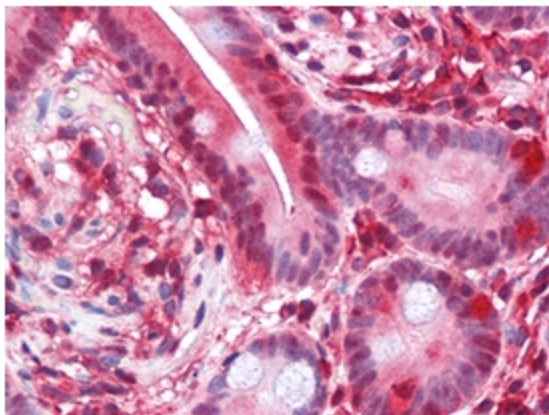
Synonyms:

Par-4

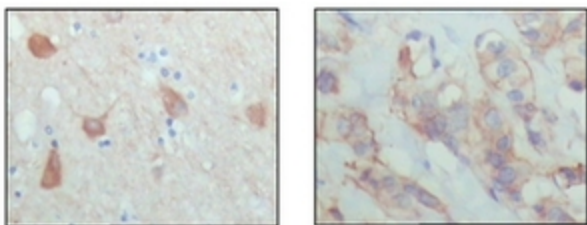
Product images:



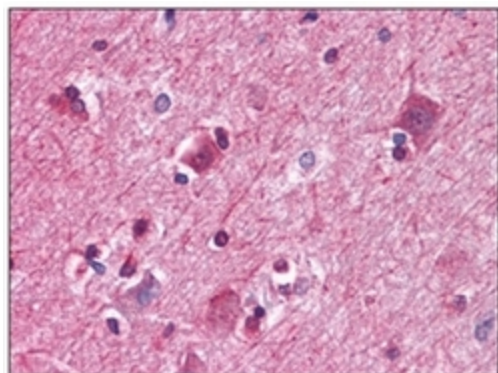
Western blot analysis using PAR4 at.-No AM06234SU-N against full-length Trx-Par4 recombinant protein (Lane 1) and HeLa cell lysate (Lane 2).



Immunohistochemical analysis of paraffin-embedded Human Small Intestine tissues using PAR4 antibody Cat.-No AM06234SU-N



Immunohistochemical analysis of paraffin-embedded Human brain (left) and breast carcinoma (right), showing cytoplasmic and membrane localization using PAR4 Cat.-No AM06234SU-N with DAB staining.



Immunohistochemical analysis of paraffin-embedded Human Brain Cortex tissues using PAR4 antibody Cat.-No AM06234SU-N