

Product datasheet for **AM06231SU-N**

Her2 (ERBB2) Mouse Monoclonal Antibody [Clone ID: 6C2B12]

Product data:

Product Type:	Primary Antibodies
Clone Name:	6C2B12
Applications:	ELISA, IHC, WB
Recommended Dilution:	ELISA: 1/10000. Western Blot: 1/500 - 1/2000. Immunohistochemistry on Paraffin Sections: 1/200 - 1/1000.
Reactivity:	Human
Host:	Mouse
Clonality:	Monoclonal
Immunogen:	Purified recombinant fragment of human ERBB2 (aa750-987) expressed in E. Coli.
Specificity:	This Mouse IgG1/IgG2b monoclonal antibody recognizes ERBB2
Formulation:	State: Ascites State: Ascitic fluid containing 0.03% Sodium Azide.
Conjugation:	Unconjugated
Storage:	Store the antibody undiluted at 2-8°C for one month or (in aliquots) at -20°C for longer. Avoid repeated freezing and thawing.
Stability:	Shelf life: one year from despatch.
Gene Name:	erb-b2 receptor tyrosine kinase 2
Database Link:	Entrez Gene 2064 Human P04626



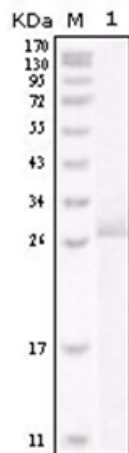
[View online »](#)

Background:

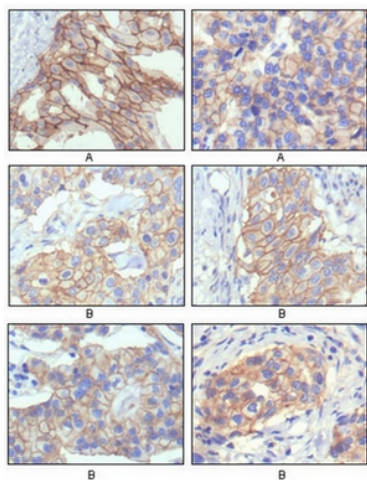
ERBB2: v-erb-b2 erythroblastic leukemia viral oncogene homolog 2, neuro/glioblastoma derived oncogene homolog (avian). This gene encodes a member of the epidermal growth factor (EGF) receptor family of receptor tyrosine kinases. This protein has no ligand binding domain of its own and therefore cannot bind growth factors. However, it does bind tightly to other ligand-bound EGF receptor family members to form a heterodimer, stabilizing ligand binding and enhancing kinase-mediated activation of downstream signalling pathways, such as those involving mitogen-activated protein kinase and phosphatidylinositol-3 kinase. Allelic variations at amino acid positions 654 and 655 of isoform a (positions 624 and 625 of isoform b) have been reported, with the most common allele, Ile654/Ile655, shown here. Amplification and/or overexpression of this gene has been reported in numerous cancers, including breast and ovarian tumors. Alternative splicing results in several additional transcript variants, some encoding different isoforms and others that have not been fully characterized

Synonyms:

HER-2, NEU, p185erbB2, NGL, c-erbB-2, MNL19

Product images:

Western blot analysis using ERBB2 antibody Cat.-
No AM06231SU-N against truncated ERBB2
recombinant protein.



Immunohistochemical analysis of paraffin-embedded human breast intraductal carcinoma tissues (A) and breast infiltrating ductal carcinoma tissues (B) showing membrane localization using ERBB2 antibody Cat.-No AM06231SU-N with DAB staining.