

## Product datasheet for **AM06228SU-N**

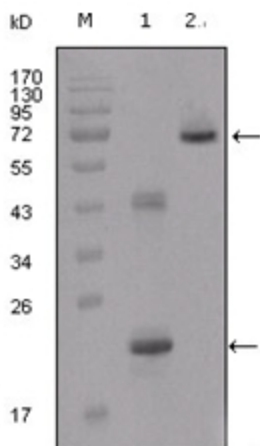
### IGFBP2 Mouse Monoclonal Antibody [Clone ID: 1F6F6]

#### Product data:

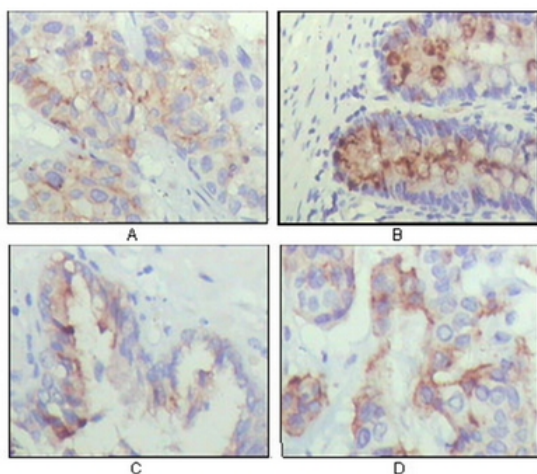
Product Type:	Primary Antibodies
Clone Name:	1F6F6
Applications:	ELISA, IHC, WB
Recommended Dilution:	<b>ELISA:</b> 1/10000. <b>Western Blot:</b> 1/500 - 1/2000. <b>Immunohistochemistry on Paraffin Sections:</b> 1/200 - 1/1000.
Reactivity:	Human
Host:	Mouse
Isotype:	IgG1
Clonality:	Monoclonal
Immunogen:	Purified recombinant fragment of protein IGFBP2 (aa180-328) expressed in E. Coli.
Specificity:	Recognizes Insulin-like growth factor binding protein 2 (IGFBP2)
Formulation:	State: Ascites State: Ascitic fluid containing 0.03% Sodium Azide.
Conjugation:	Unconjugated
Storage:	Store the antibody undiluted at 2-8°C for one month or (in aliquots) at -20°C for longer. Avoid repeated freezing and thawing.
Stability:	Shelf life: one year from despatch.
Gene Name:	insulin like growth factor binding protein 2
Database Link:	<a href="#">Entrez Gene 3485 Human P18065</a>
Background:	Insulin-like growth factor binding protein 2 (IGFBP2) is a member of the ISGBP family which bind various IGFs. IGFBP2 is overexpressed in a wide spectrum of other cancers, including glioma, prostate cancer, synovial sarcoma, neuroblastoma, colon cancer, adrenocortical cancer, lung cancer, Wilms' tumor, and hepatoblastoma. The overexpression of IGFBP2 also correlates with the aggressiveness of some tumors. IGFBP2 activates the expression of matrix metalloprotease 2, which contributes to cell invasiveness.
Synonyms:	IGF-binding protein 2, IGFBP-2, IBP2, IBP-2



[View online »](#)

**Product images:**


Western blot analysis using IGFBP2 antibody Cat.-No AM06228SU-N against truncated IGFBP2-His recombinant protein (Lane 1) and truncated IGFBP2 (aa40-328)-hlgGfc transfected CHO-K1 cell lysate (Lane 2).



Immunohistochemical analysis of paraffin-embedded human lung cancer (A), rectum (B), prostate (C), colon cancer (D) showing cytoplasmic localization using IGFBP2 antibody Cat.-No AM06228SU-N with DAB staining.