

Product datasheet for **AM06227SU-N**

DYKDDDDK Epitope Tag Mouse Monoclonal Antibody [Clone ID: 2F11G1]

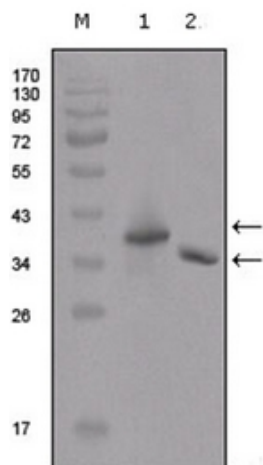
Product data:

Product Type:	Primary Antibodies
Clone Name:	2F11G1
Applications:	WB
Recommended Dilution:	ELISA: 1/10000. Western Blot: 1/500 - 1/2000.
Host:	Mouse
Isotype:	IgG2b
Clonality:	Monoclonal
Immunogen:	Synthetic peptide corresponding to aa(DYKDDDDK), conjugated to KLH.
Specificity:	The antibody is useful for the identification of proteins with Flag markers at free N-termini and C-termini by common immunological applications in yeast, animal, and E. coli cells.
Formulation:	State: Ascites State: Ascitic fluid containing 0.03% Sodium Azide.
Conjugation:	Unconjugated
Storage:	Store the antibody undiluted at 2-8°C for one month or (in aliquots) at -20°C for longer. Avoid repeated freezing and thawing.
Stability:	Shelf life: one year from despatch.
Synonyms:	FLAG Epitope Tag, ECS Epitope Tag, FLAG-tag, ECS-tag, D-tag



[View online »](#)

Product images:



Western blot analysis using Flag antibody Cat.-No AM06227SU-N against two different fusion protein (Lane 1), (Lane 2) with flag tag.