

## Product datasheet for **AM06223SU-N**

### Fibulin 5 (FBLN5) Mouse Monoclonal Antibody [Clone ID: 1G6A4]

#### Product data:

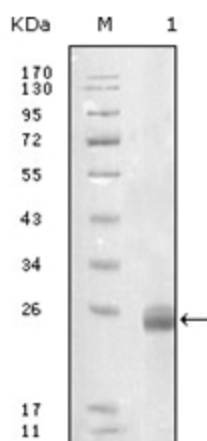
Product Type:	Primary Antibodies
Clone Name:	1G6A4
Applications:	ELISA, IHC, WB
Recommended Dilution:	<b>ELISA:</b> 1/10000. <b>Western Blot:</b> 1/500 - 1/2000. <b>Immunohistochemistry o Paraffin Sections:</b> 1/200 - 1/1000.
Reactivity:	Human
Host:	Mouse
Isotype:	IgG1
Clonality:	Monoclonal
Immunogen:	Purified recombinant fragment of FBLN5 (aa242-448) expressed in E. Coli.
Specificity:	Recognizes Fibulin-5
Formulation:	State: Ascites State: Ascitic fluid containing 0.03% Sodium Azide.
Conjugation:	Unconjugated
Storage:	Store the antibody undiluted at 2-8°C for one month or (in aliquots) at -20°C for longer. Avoid repeated freezing and thawing.
Stability:	Shelf life: one year from despatch.
Gene Name:	fibulin 5
Database Link:	<a href="#">Entrez Gene 10516 Human Q9UBX5</a>
Background:	The protein is a secreted, extracellular matrix protein containing an Arg-Gly-Asp (RGD) motif and calcium-binding EGF-like domains. It promotes adhesion of endothelial cells through interaction of integrins and the RGD motif. It is prominently expressed in developing arteries but less so in adult vessels. However, its expression is reinduced in balloon-injured vessels and atherosclerotic lesions, notably in intimal vascular smooth muscle cells and endothelial cells. Therefore, the protein encoded by this gene may play a role in vascular development and remodeling.



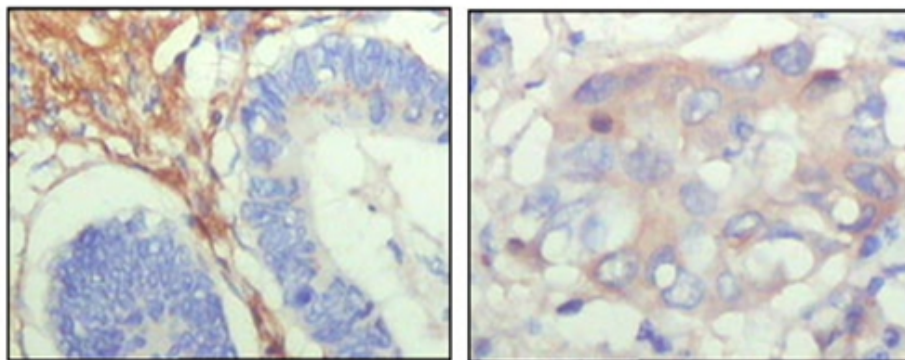
[View online »](#)

Synonyms: FIBL-5, FBLN5, DANCE, Urine p50 protein, UP50

### Product images:



Western blot analysis using FBLN5 antibody Cat.-No AM06223SU-N against truncated FBLN5-His recombinant protein.



Immunohistochemical analysis of paraffin-embedded human colon cancer (left) and breast cancer (right) showing cytoplasmic localization with DAB staining using FBLN5 antibody Cat.-No AM06223SU-N.