

Product datasheet for **AM06222SU-N**

Eph receptor B3 (EPHB3) Mouse Monoclonal Antibody [Clone ID: 4A122D1]

Product data:

Product Type:	Primary Antibodies
Clone Name:	4A122D1
Applications:	ELISA, IHC, WB
Recommended Dilution:	ELISA: 1/10000. Western Blot: 1/500 - 1/2000. Immunohistochemistry on Paraffin Sections: 1/200 - 1/1000.
Reactivity:	Human
Host:	Mouse
Isotype:	IgG2a
Clonality:	Monoclonal
Immunogen:	Purified recombinant fragment of EphB3 (aa39-212) expressed in E. Coli.
Specificity:	Recognizes EPH receptor B3 (EphB3).
Formulation:	State: Ascites State: Ascitic fluid containing 0.03% Sodium Azide.
Conjugation:	Unconjugated
Storage:	Store the antibody undiluted at 2-8°C for one month or (in aliquots) at -20°C for longer. Avoid repeated freezing and thawing.
Stability:	Shelf life: one year from despatch.
Gene Name:	EPH receptor B3
Database Link:	Entrez Gene 2049 Human P54753



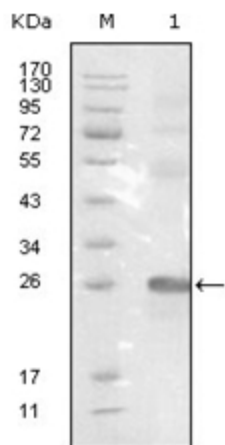
[View online »](#)

Background:

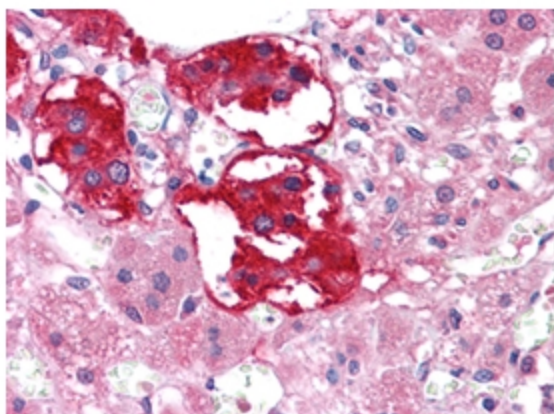
Ephrin receptors and their ligands, the ephrins, mediate numerous developmental processes, particularly in the nervous system. Based on their structures and sequence relationships, ephrins are divided into the ephrin-A (EFNA) class, which are anchored to the membrane by a glycosylphosphatidylinositol linkage, and the ephrin-B (EFNB) class, which are transmembrane proteins. The Eph family of receptors are divided into 2 groups based on the similarity of their extracellular domain sequences and their affinities for binding ephrin-A and ephrin-B ligands. Ephrin receptors make up the largest subgroup of the receptor tyrosine kinase (RTK) family. The protein encoded by this gene is a receptor for ephrin-B family members.

Synonyms:

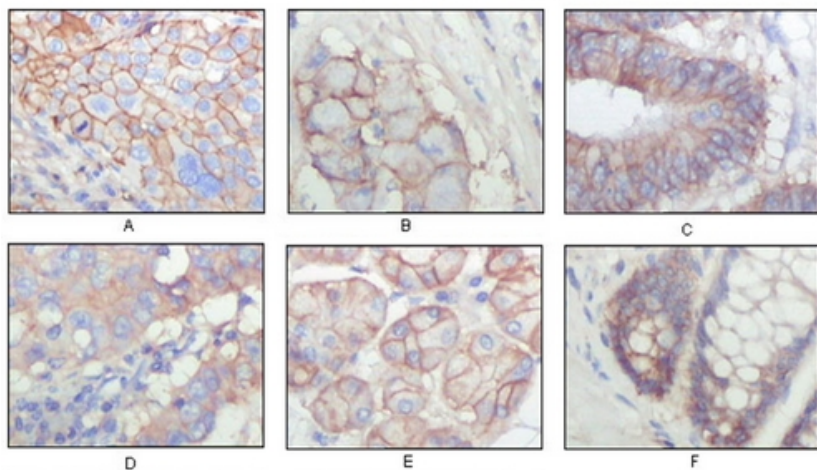
Ephrin type-B receptor 3, ETK2, HEK2, TYRO6

Product images:


Western blot analysis using EphB3 ntibody Cat.-No AM06222SU-N against truncated EphB3-His recombinant protein.



Immunohistochemical analysis of paraffin-embedded human Adrenal tissues using EPHB3 ntibody Cat.-No AM06222SU-N



Immunohistochemical analysis of paraffin-embedded human lung squamous cell carcinoma (A), lung adenocarcinoma (B), colon carcinoma (C), breast carcinoma (D), normal sublingual gland (E), normal rectal (F), showing membrane localization with DAB staining using EphB3 antibody Cat.-No AM06222SU-N