

Product datasheet for **AM06219SU-N**

Fibulin 2 (FBLN2) Mouse Monoclonal Antibody [Clone ID: 7H4F6/3B9A11]

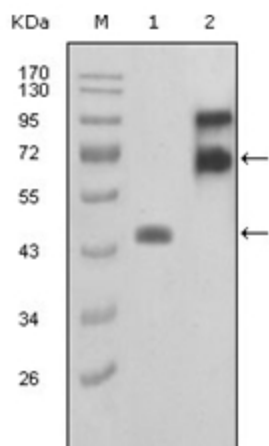
Product data:

Product Type:	Primary Antibodies
Clone Name:	7H4F6/3B9A11
Applications:	ELISA, WB
Recommended Dilution:	ELISA: 1/10000. Western Blot: 1/500 - 1/2000.
Reactivity:	Human
Host:	Mouse
Isotype:	IgG1
Clonality:	Monoclonal
Immunogen:	Purified recombinant fragment of FBLN2 (aa180-440) expressed in E. Coli.
Specificity:	Recognizes Fibulin-2
Formulation:	State: Ascites State: Ascitic fluid containing 0.03% Sodium Azide.
Conjugation:	Unconjugated
Storage:	Store the antibody undiluted at 2-8°C for one month or (in aliquots) at -20°C for longer. Avoid repeated freezing and thawing.
Stability:	Shelf life: one year from despatch.
Gene Name:	fibulin 2
Database Link:	Entrez Gene 2199 Human P98095
Background:	This gene encodes an extracellular matrix protein, which belongs to the fibulin family. This protein binds various extracellular ligands and calcium. It may play a role during organ development, in particular, during the differentiation of heart, skeletal and neuronal structures. Alternatively spliced transcript variants encoding different isoforms have been identified.
Synonyms:	FIBL-2, FBLN2



[View online »](#)

Product images:



Western blot analysis using FBLN2 antibody Cat.-No AM06219SU-N against truncated FBLN2-Trx recombinant protein (Lane 1) and truncated FBLN2 (aa28-444)-hIgGFc transfected COS7 cell lysate (Lane 2).