

Product datasheet for **AM06218SU-N**

Calnexin (CANX) Mouse Monoclonal Antibody [Clone ID: 3H4A7]

Product data:

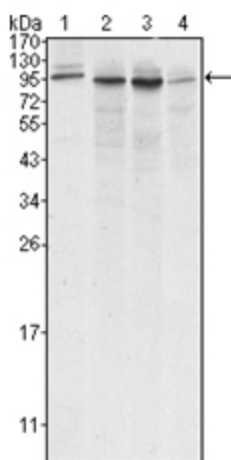
Product Type:	Primary Antibodies
Clone Name:	3H4A7
Applications:	ELISA, IF, WB
Recommended Dilution:	ELISA: 1/10000. Western Blotting: 1/500 - 1/2000. Immunofluorescence: 1/200 - 1/1000.
Reactivity:	Human
Host:	Mouse
Isotype:	IgG2b
Clonality:	Monoclonal
Immunogen:	Synthetic peptide corresponding to aa (CEAAEERPWLWVVYILTVL) of Human Calnexin, conjugated to KLH.
Specificity:	Recognizes Calnexin
Formulation:	State: Ascites State: Ascitic fluid containing 0.03% Sodium Azide.
Conjugation:	Unconjugated
Storage:	Store the antibody undiluted at 2-8°C for one month or (in aliquots) at -20°C for longer. Avoid repeated freezing and thawing.
Stability:	Shelf life: one year from despatch.
Gene Name:	calnexin
Database Link:	Entrez Gene 821 Human P27824
Background:	This gene encodes a member of the calnexin family of molecular chaperones. The encoded protein is a calcium-binding, endoplasmic reticulum (ER)-associated protein that interacts transiently with newly synthesized N-linked glycoproteins, facilitating protein folding and assembly. It may also play a central role in the quality control of protein folding by retaining incorrectly folded protein subunits within the ER for degradation. Alternatively spliced transcript variants encoding the same protein have been described.



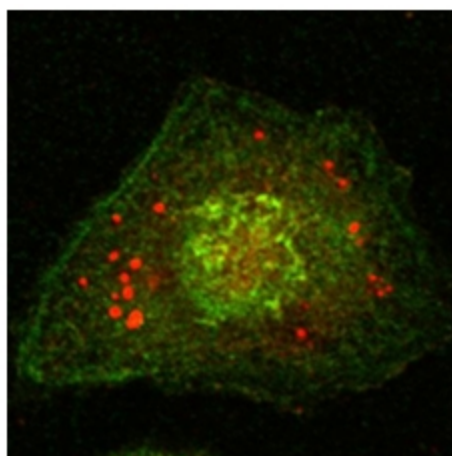
[View online »](#)

Synonyms: IP90, p90, CANX, ER Marker

Product images:



Western blot analysis using Calnexin antibody Cat.-No AM06218SU-N against A431 (Lane 1), HeLa (Lane 2), MCF-7 (Lane 3) and A549 (Lane 4) cell lysate.



Confocal immunofluorescence analysis of HeLa cells using Calnexin antibody Cat.-No AM06218SU-N (green).