

Product datasheet for **AM06217SU-N**

Visfatin (NAMPT) Mouse Monoclonal Antibody [Clone ID: 1D3A12]

Product data:

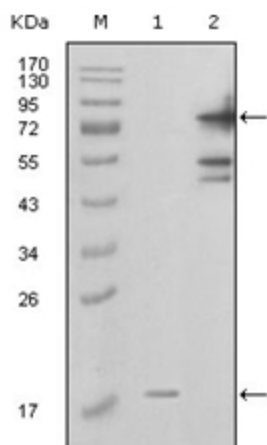
Product Type:	Primary Antibodies
Clone Name:	1D3A12
Applications:	ELISA, WB
Recommended Dilution:	ELISA: 1/10000. Western Blotting: 1/500 - 1/2000.
Reactivity:	Human
Host:	Mouse
Isotype:	IgG1
Clonality:	Monoclonal
Immunogen:	Purified recombinant fragment of PBEF1 (aa338-479) expressed in E. Coli.
Specificity:	Recognizes PBEF1
Formulation:	State: Ascites State: Ascitic fluid containing 0.03% Sodium Azide.
Conjugation:	Unconjugated
Storage:	Store the antibody undiluted at 2-8°C for one month or (in aliquots) at -20°C for longer. Avoid repeated freezing and thawing.
Stability:	Shelf life: one year from despatch.
Gene Name:	nicotinamide phosphoribosyltransferase
Database Link:	Entrez Gene 10135 Human P43490
Background:	PBEF1: nicotinamide phosphoribosyltransferase. This gene encodes a protein that catalyzes the condensation of nicotinamide with 5-phosphoribosyl-1-pyrophosphate to yield nicotinamide mononucleotide, one step in the biosynthesis of nicotinamide adenine dinucleotide. The protein is an adipokine that is localized to the bloodstream and has various functions, including the promotion of vascular smooth muscle cell maturation and inhibition of neutrophil apoptosis. It also activates insulin receptor and has insulin-mimetic effects, lowering blood glucose and improving insulin sensitivity. The protein is highly expressed in visceral fat and serum levels of the protein correlate with obesity.



[View online »](#)

Synonyms: NAMPRTase, PBEF, PBEF1

Product images:



Western blot analysis using PBEF1 antibody Cat.- No AM06217SU-N against truncated PBEF1-His recombinant protein (Lane 1) and full-length GFP-PBEF1 (aa1-491) transfected COS7 cell lysate (Lane 2).