

Product datasheet for **AM06215SU-N**

YES1 Mouse Monoclonal Antibody [Clone ID: 2F3E6]

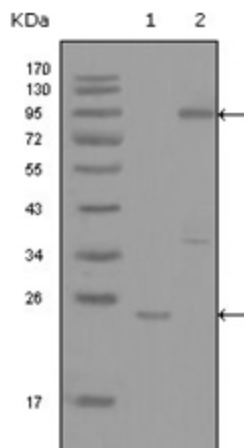
Product data:

Product Type:	Primary Antibodies
Clone Name:	2F3E6
Applications:	ELISA, WB
Recommended Dilution:	ELISA: 1/10000. Western Blotting: 1/500 - 1/2000.
Reactivity:	Human
Host:	Mouse
Isotype:	IgG1
Clonality:	Monoclonal
Immunogen:	Purified recombinant fragment of YES (aa10-193) expressed in E. Coli.
Specificity:	Recognizes YES1
Formulation:	State: Ascites State: Ascitic fluid containing 0.03% Sodium Azide.
Conjugation:	Unconjugated
Storage:	Store the antibody undiluted at 2-8°C for one month or (in aliquots) at -20°C for longer. Avoid repeated freezing and thawing.
Stability:	Shelf life: one year from despatch.
Gene Name:	YES proto-oncogene 1, Src family tyrosine kinase
Database Link:	Entrez Gene 7525 Human P07947
Background:	YES1, v-yes-1 Yamaguchi sarcoma viral oncogene homolog 1. This gene is the cellular homolog of the Yamaguchi sarcoma virus oncogene. The encoded protein has tyrosine kinase activity and belongs to the src family of proteins. This gene lies in close proximity to thymidylate synthase gene on chromosome 18, and a corresponding pseudogene has been found on chromosome 22.
Synonyms:	YES, p61-Yes, c-Yes



[View online »](#)

Product images:



Western blot analysis using YES1 antibody cat.-No AM06215SU-N against truncated YES1-His recombinant protein (Lane 1) and full-length GFP-YES1 (aa1-543) transfected COS7 cell lysate (Lane 2).