

Product datasheet for **AM06214SU-N**

Eph receptor B1 (EPHB1) Mouse Monoclonal Antibody [Clone ID: 5F10A4]

Product data:

Product Type:	Primary Antibodies
Clone Name:	5F10A4
Applications:	ELISA, IHC, WB
Recommended Dilution:	ELISA: 1/10000. Western Blotting: 1/500 - 1/2000. Immunohistochemistry on Paraffin Sections: 1/200 - 1/1000.
Reactivity:	Human
Host:	Mouse
Isotype:	IgG1
Clonality:	Monoclonal
Immunogen:	Purified recombinant fragment of EphB1 (aa19-133) expressed in E. Coli.
Specificity:	Recognizes EPH receptor B1 (EhpB1).
Formulation:	State: Ascites State: Ascitic fluid containing 0.03% Sodium Azide.
Conjugation:	Unconjugated
Storage:	Store the antibody undiluted at 2-8°C for one month or (in aliquots) at -20°C for longer. Avoid repeated freezing and thawing.
Stability:	Shelf life: one year from despatch.
Gene Name:	EPH receptor B1
Database Link:	Entrez Gene 2047 Human P54762



[View online »](#)

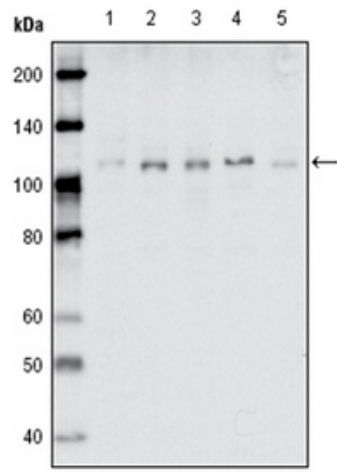
Background:

EphB1: EPH receptor B1. It is a receptor for ephrin-B family members. Ephrin receptors and their ligands, the ephrins, mediate numerous developmental processes, particularly in the nervous system. Based on their structures and sequence relationships, ephrins are divided into the ephrin-A (EFNA) class, which are anchored to the membrane by a glycosylphosphatidylinositol linkage, and the ephrin-B (EFNB) class, which are transmembrane proteins. The Eph family of receptors are divided into 2 groups based on the similarity of their extracellular domain sequences and their affinities for binding ephrin-A and ephrin-B ligands. Ephrin receptors make up the largest subgroup of the receptor tyrosine kinase (RTK) family.

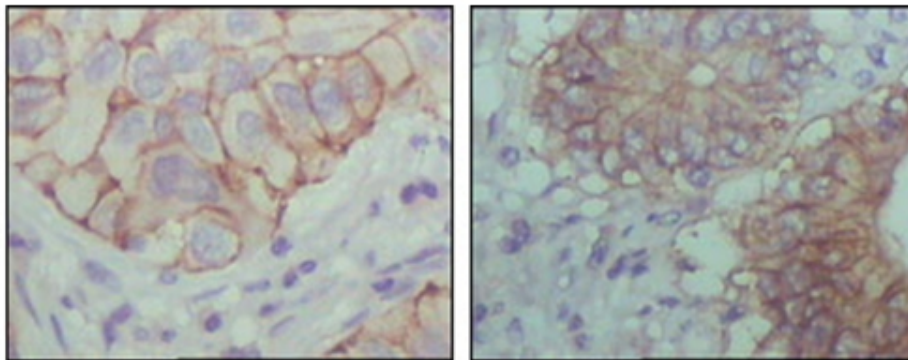
Synonyms:

EPHT2, NET, HEK6, ELK, EPH2, Ephrin type-B receptor 1

Product images:



Western blot analysis using EhpB1 antibody Cat.-No AM06214SU-N against MDA-MB-468 (Lane 1), MDA-MB-453 (Lane 2), MCF-7 (Lane 3), T47D (Lane 4) and SKBR-3 (Lane 5) cell lysate.



Immunohistochemical analysis of paraffin-embedded human lung cancer (left) and colon cancer (right) showing cytoplasmic localization with DAB staining using EphB1 antibody Cat.-No AM06214SU-N