

## Product datasheet for **AM06212SU-N**

### Alpha B Crystallin (CRYAB) Mouse Monoclonal Antibody [Clone ID: 1D11C6E6]

#### Product data:

Product Type:	Primary Antibodies
Clone Name:	1D11C6E6
Applications:	ELISA, IHC, WB
Recommended Dilution:	<b>ELISA:</b> 1/10000. <b>Western Blotting:</b> 1/500 - 1/2000. <b>Immunohistochemistry on Paraffin Sections:</b> 1/200 - 1/1000. Heat induced antigen retrieval in pH 6.0 citrate buffer is recommended.
Reactivity:	Human
Host:	Mouse
Isotype:	IgG2a
Clonality:	Monoclonal
Immunogen:	Purified recombinant fragment of CRYAB (aa1-175) expressed in E. Coli.
Specificity:	This antibody recognizes Alpha Crystallin B Chain (CRYAB).
Formulation:	State: Ascites State: Ascitic fluid containing 0.03% Sodium Azide.
Conjugation:	Unconjugated
Storage:	Store the antibody undiluted at 2-8°C for one month or (in aliquots) at -20°C for longer. Avoid repeated freezing and thawing.
Stability:	Shelf life: one year from despatch.
Gene Name:	crystallin alpha B
Database Link:	<a href="#">Entrez Gene 1410 Human P02511</a>



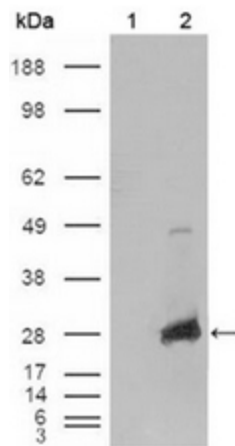
[View online »](#)

**Background:**

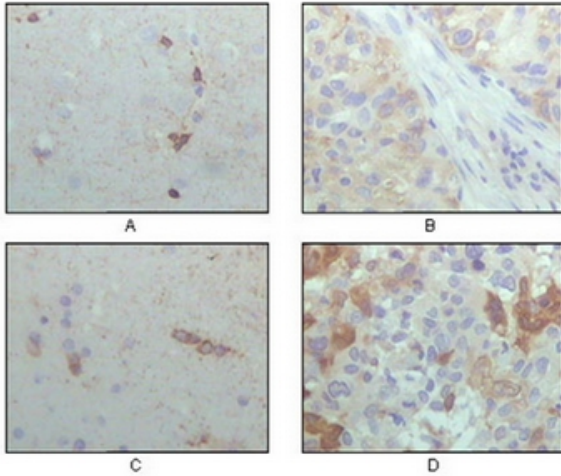
Alpha crystallins are composed of two gene products: alpha-A and alpha-B, for acidic and basic, respectively. Alpha crystallins can be induced by heat shock and are members of the small heat shock protein (sHSP also known as the HSP20) family. They act as molecular chaperones although they do not renature proteins and release them in the fashion of a true chaperone; instead they hold them in large soluble aggregates. Post-translational modifications decrease the ability to chaperone. These heterogeneous aggregates consist of 30-40 subunits; the alpha-A and alpha-B subunits have a 3:1 ratio, respectively. Two additional functions of alpha crystallins are an autokinase activity and participation in the intracellular architecture. Alpha-A and alpha-B gene products are differentially expressed; alpha-A is preferentially restricted to the lens and alpha-B is expressed widely in many tissues and organs. Elevated expression of alpha-B crystallin occurs in many neurological diseases; a missense mutation cosegregated in a family with a desmin-related myopathy.

**Synonyms:**

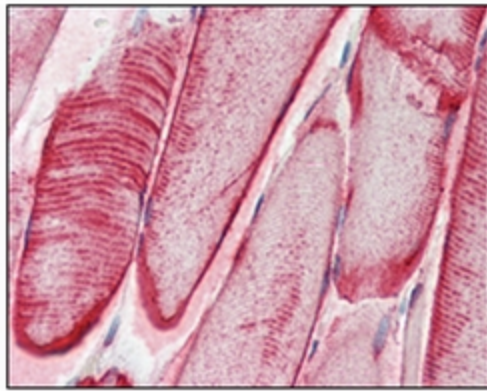
Alpha(B)-crystallin, CRYAB, Heat shock protein beta-5, Renal carcinoma antigen NY-REN-27, HspB5

**Product images:**

Western blot analysis using CRYAB antibody Cat.-No AM06212SU-N against HEK293T cells transfected with the pCMV6-ENTRY control (Lane 1) and pCMV6-ENTRY CRYAB cDNA (Lane 2).



Immunohistochemical analysis of paraffin-embedded human brain hippocampus (A), lung cancer (B), brain tumor (C), breast cancer (D), showing cytoplasmic localization with DAB staining using CRYAB antibody Cat.-No AM06212SU-N



Formalin-Fixed, Paraffin-Embedded Human Skeletal Muscle stained with CRYAB antibody AM06212SU-N followed by biotinylated anti-Mouse IgG secondary antibody, alkaline phosphatase-streptavidin and chromogen.