

Product datasheet for **AM06197SU-N**

CD20 (MS4A1) Mouse Monoclonal Antibody [Clone ID: 3E9D3C1G3]

Product data:

Product Type:	Primary Antibodies
Clone Name:	3E9D3C1G3
Applications:	ELISA, IF, IHC
Recommended Dilution:	ELISA: 1/10000. Immunofluorescence: 1/200 - 1/1000. Immunohistochemistry on Paraffin Sections: 1/200 - 1/1000.
Reactivity:	Human
Host:	Mouse
Isotype:	IgG
Clonality:	Monoclonal
Immunogen:	KLH conjugated Synthetic peptide corresponding to aa (EPANPSEKNSPSTQY) of Human CD20
Specificity:	Recognizes MS4A1/CD20.
Formulation:	State: Ascites State: Ascitic fluid containing 0.03% Sodium Azide.
Conjugation:	Unconjugated
Storage:	Store the antibody undiluted at 2-8°C for one month or (in aliquots) at -20°C for longer. Avoid repeated freezing and thawing.
Stability:	Shelf life: one year from despatch.
Gene Name:	membrane spanning 4-domains A1
Database Link:	Entrez Gene 931 Human P11836



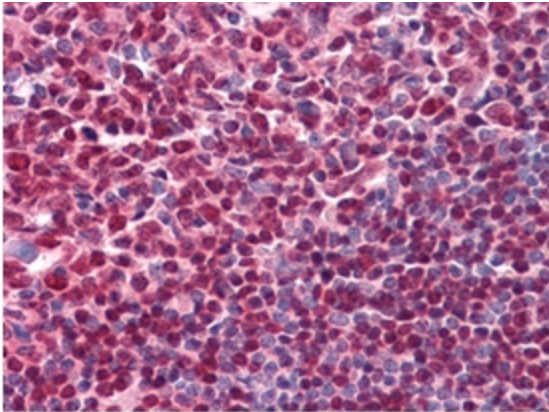
[View online »](#)

Background:

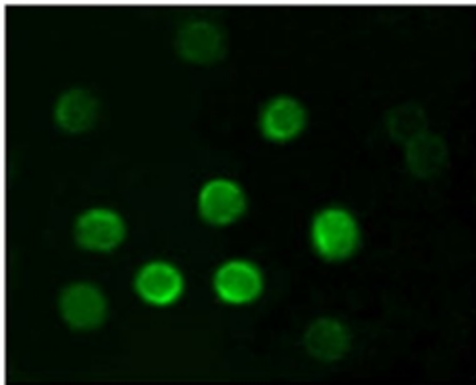
CD20 (MS4A1, membrane-spanning 4-domains, subfamily A, member 1) is a member of the membrane-spanning 4A gene family. Members of this nascent protein family are characterized by common structural features and similar intron/exon splice boundaries and display unique expression patterns among hematopoietic cells and nonlymphoid tissues. The CD20 antigen is present on human pre B lymphocytes and on B lymphocytes at all stages of maturation, except on plasma cells. Low level expression of the CD20 antigen has been detected on normal T lymphocytes. The CD20 molecule is involved in regulation of B cell differentiation, presumably via its reported function as a Ca⁺⁺ channel subunit. And it is known to accelerate the G0 to G1 progression induced by IGF-1.

Synonyms:

MS4A1, Leu-16, Bp35, B-cell marker

Product images:

Immunohistochemical analysis of paraffin-embedded human Tonsil tissues using CD20 antibody



Immunofluorescence analysis of B lymphocytes using CD20 antibody