

Product datasheet for **AM06190SU-N**

AMACR Mouse Monoclonal Antibody [Clone ID: 2A10F3]

Product data:

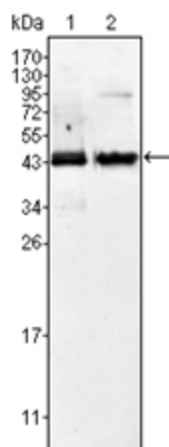
Product Type:	Primary Antibodies
Clone Name:	2A10F3
Applications:	IF, IHC, WB
Recommended Dilution:	ELISA: 1/10000. Western Blotting: 1/500 - 1/2000 . Immunofluorescence: 1/200 - 1/1000. Immunohistochemistry on Paraffin Sections: 1/200 - 1/1000.
Reactivity:	Human, Mouse
Host:	Mouse
Isotype:	IgG2b
Clonality:	Monoclonal
Immunogen:	Purified recombinant fragment of human AMACR expressed in E. Coli.
Specificity:	Recognizes AMACR (alpha-methylacyl-CoA racemase).
Formulation:	State: Ascites State: Ascitic fluid containing 0.03% Sodium Azide.
Storage:	Store the antibody undiluted at 2-8°C for one month or (in aliquots) at -20°C for longer. Avoid repeated freezing and thawing.
Stability:	Shelf life: one year from despatch.
Database Link:	Entrez Gene 23600 Human
Background:	AMACR (alpha-methylacyl-CoA racemase) has been recently described as prostate cancer-specific gene that encodes a protein involved in the beta-oxidation of branched chain fatty acids. Expression of AMACR protein is found in prostatic adenocarcinoma but not in benign prostatic tissue. It stains premalignant lesions of prostate: high-grade prostatic intraepithelial neoplasia (PIN) and atypical adenomatous hyperplasia. AMACR can be used as a positive marker for PIN. Defects in AMACR are the cause of congenital bile acid synthesis defect type 4 (CBAS4); also known as cholestasis, intrahepatic, with defective conversion of trihydroxycoprostanic acid to cholic acid or trihydroxycoprostanic acid in bile. Clinical features include neonatal jaundice, intrahepatic cholestasis, bile duct deficiency and absence of cholic acid from bile.



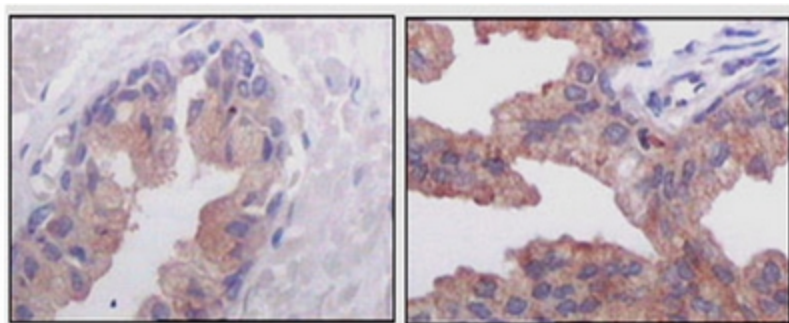
[View online »](#)

Synonyms: Alpha-methylacyl-CoA racemase, P504S

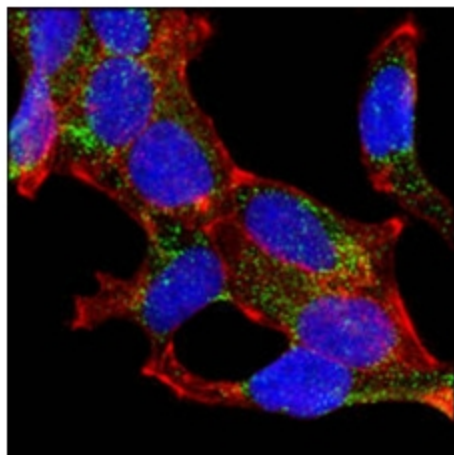
Product images:



Western blot analysis using AMACR mouse mAb against Jurkat (1) and LNCaP (2) cell lysate.



Immunohistochemical analysis of paraffin-embedded human normal prostate tissues (left) and prostate adenocarcinoma tissues (right), showing cytoplasmic localization using AMACR mouse mAb with DAB staining.



Confocal immunofluorescence analysis of LNCaP cells using AMACR mouse mAb (green). Red: Actin filaments have been labeled with DY-554 phalloidin. Blue: DRAQ5 fluorescent DNA dye.