

## Product datasheet for **AM06189SU-N**

### **S100 beta (S100B) Mouse Monoclonal Antibody [Clone ID: 9A11B9]**

#### **Product data:**

Product Type:	Primary Antibodies
Clone Name:	9A11B9
Applications:	IHC, WB
Recommended Dilution:	<b>ELISA:</b> 1/10000. <b>Western Blotting:</b> 1/500 - 1/2000. <b>Immunohistochemistry on Paraffin Sections:</b> 1/200 - 1/1000.
Reactivity:	Human
Host:	Mouse
Isotype:	IgG1
Clonality:	Monoclonal
Immunogen:	Purified recombinant fragment of S100B expressed in E. Coli.
Specificity:	Recognizes S100B
Formulation:	State: Ascites State: Ascitic fluid containing 0.03% Sodium Azide.
Conjugation:	Unconjugated
Storage:	Store the antibody undiluted at 2-8°C for one month or (in aliquots) at -20°C for longer. Avoid repeated freezing and thawing.
Stability:	Shelf life: one year from despatch.
Gene Name:	S100 calcium binding protein B
Database Link:	<a href="#">Entrez Gene 6285 Human P04271</a>



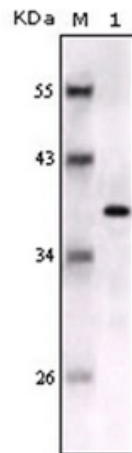
[View online »](#)

**Background:**

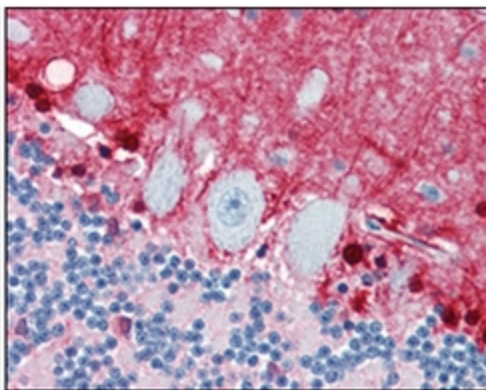
S100B (S100 calcium binding protein B) is a member of the S100 family of proteins containing 2 EF-hand calcium binding motifs. S100 proteins are localized in the cytoplasm and/or nucleus of a wide range of cells, and involved in the regulation of a number of cellular processes such as cell cycle progression and differentiation. S-100 proteins and parvalbumin proteins are each expressed in neural tissues. In addition, S100B are present in a variety of other tissues, and calbindin is present in intestine and kidney. Parvalbumin B is found in many tumor tissues as well as in the organ of Corti. Calbindin, S-100 proteins and parvalbulmins have all been detected in leydig cells and the testis. These proteins are thought to play a role in hormone production and spermatogenesis. Chromosomal rearrangements and altered expression of this gene have been implicated in several neurological, neoplastic, and other types of diseases, including Alzheimer's disease, Down's syndrome, epilepsy, amyotrophic lateral sclerosis, melanoma, and type I diabetes.

**Synonyms:**

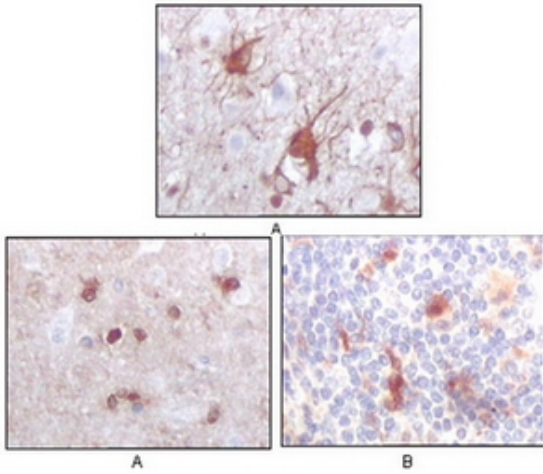
Protein S100-B, S100 beta, S100 calcium-binding protein B, S-100 protein subunit beta, S-100 protein beta chain, Astrocyte Marker

**Product images:**

Western blot analysis using S100B antibody Cat.-No AM06189SU-N against full-length S100B recombinant protein.



Immunohistochemical analysis of paraffin-embedded human brain, cerebellum using S100B antibody Cat.-No AM06189SU-N with DAB staining.



Immunohistochemical analysis of paraffin-embedded human brain (A) and human thymus tissues (B), showing cytoplasmic localization using S100B antibody Cat.-No AM06189SU-N with DAB staining.