

## Product datasheet for **AM06185SU-N**

### SorLA (SORL1) Mouse Monoclonal Antibody [Clone ID: 3B6B11]

#### Product data:

Product Type:	Primary Antibodies
Clone Name:	3B6B11
Applications:	FC, IF, IHC, WB
Recommended Dilution:	<b>ELISA:</b> 1/10000. <b>Western Blotting:</b> 1/500-1/2000. <b>Immunofluorescence:</b> 1/200-1/1000. <b>Immunohistochemistry on Frozen Sections:</b> 1/200-1/1000. <b>Immunohistochemistry on Paraffin Sections:</b> 1/200-1/1000.
Reactivity:	Human
Host:	Mouse
Isotype:	IgG1
Clonality:	Monoclonal
Immunogen:	Purified recombinant fragment of Human SORL1 expressed in E. Coli.
Specificity:	Recognizes Sortilin-related receptor (SORL1)
Formulation:	State: Ascites State: Ascitic fluid Preservative: 0.03% Sodium Azide
Conjugation:	Unconjugated
Storage:	Store undiluted at 2-8°C for one month or (in aliquots) at -20°C for longer. Avoid repeated freezing and thawing.
Stability:	Shelf life: one year from despatch.
Gene Name:	sortilin-related receptor, L(DLR class) A repeats containing
Database Link:	<a href="#">Entrez Gene 6653 Human Q92673</a>



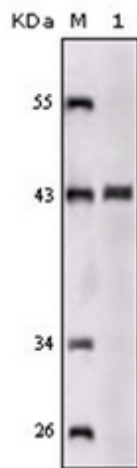
[View online »](#)

**Background:**

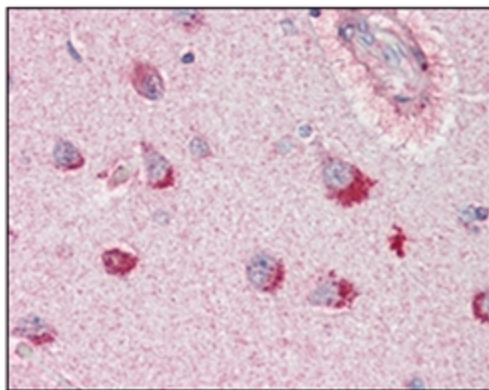
SORL1 (sortilin-related receptor, L A repeats containing) also known as sorting protein-related receptor containing LDLR class A (SorLA), is a Type I membrane protein that may be involved in cell-cell interaction. SorLA, a single transmembrane receptor, binds LDL and transports it into cells by endocytosis. SorLA is synthesized as a proreceptor which is processed to the mature form by a furin-like propeptidase. It can also bind to RAP (receptor-associated protein). SorLA is a multifunctional endocytosis receptor important in lipoprotein and protease uptake. The N-terminal propeptide, which is removed, can be cleaved by furin or homologous proteases. Endogenous SorLA binds the neuropeptide head activator (HA) and is important for HA signaling and function. The gene encoding for the protein maps to chromosome 8p23.1. SorLA is expressed mainly in brain (cerebral cortex, cerebellum and the occipital pole), but can also be found in liver, spinal cord, kidney, testis and pancreas.

**Synonyms:**

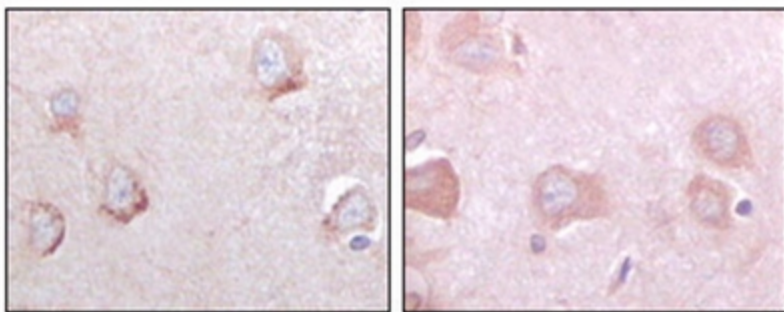
SorLA, SorLA-1, LR11

**Product images:**


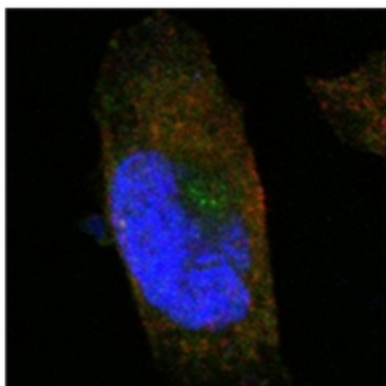
Western blot analysis using SORL1 antibody Cat.-No AM06185SU-N against truncated SORL1 recombinant protein.



Immunohistochemical analysis of paraffin-embedded human brain, cortex tissues using SORL1 antibody Cat.-No AM06185SU-N



Immunohistochemical analysis of paraffin-embedded human cerebrum tissues using SORL1 antibody Cat.-No AM06185SU-N with DAB staining.



Confocal immunofluorescence analysis of PANC-1 cells using SORL1 antibody Cat.-No AM06185SU-N (green). Red: Actin filaments have been labeled with Alexa Fluor-555 phalloidin. Blue: DRAQ5 fluorescent DNA dye.