

Product datasheet for **AM06180PU-N**

GFP Mouse Monoclonal Antibody [Clone ID: 4B10B2]

Product data:

Product Type:	Primary Antibodies
Clone Name:	4B10B2
Applications:	ELISA, FC, IF, IHC, WB
Recommended Dilution:	ELISA: 1/10000. Western Blotting: 1/500 - 1/2000. Flow Cytometry: 1/200 - 1/400. Immunohistochemistry on Paraffin Sections: 1/200 - 1/1000.
Reactivity:	GFP
Host:	Mouse
Isotype:	IgG2a
Clonality:	Monoclonal
Immunogen:	Purified recombinant fragment of GFP expressed in E. Coli.
Specificity:	Recognizes GFP (Green Fluorescence Protein).
Formulation:	PBS State: Purified State: Liquid purified IgG fraction Preservative: 0.03% Sodium Azide
Conjugation:	Unconjugated
Storage:	Store the antibody undiluted at 2-8°C for one month or (in aliquots) at -20°C for longer. Avoid repeated freezing and thawing.
Stability:	Shelf life: one year from despatch.
Predicted Protein Size:	27 kDa
Database Link:	P42212



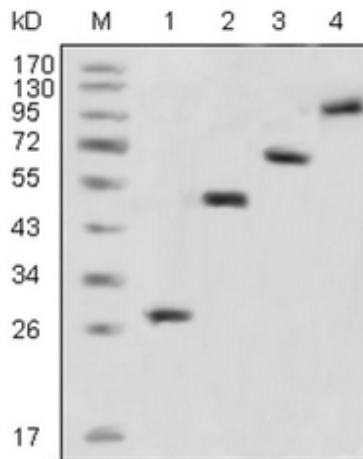
[View online »](#)

Background:

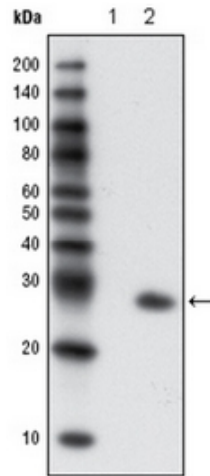
GFP (Green Fluorescence Protein) is a 27 kDa protein derived from the jellyfish *Aequorea victoria*, which emits green light when excited by blue light. GFP cDNA produces a fluorescent product when expressed in prokaryotic cells, without the need for exogenous substrates or cofactors. GFP has become an invaluable tool in cell biology research, since its intrinsic fluorescence can be visualized in living cells. GFP fluorescence is stable under fixation conditions and suitable for a variety of applications. GFP has been widely used as a reporter for gene expression, enabling researchers to visualize and localize GFP-tagged proteins within living cells without the need for chemical staining. Other applications of GFP include assessment of protein-protein interactions through the yeast two-hybrid system and measurement of distance between proteins through fluorescence energy transfer (FRET) protocols. GFP technology has considerably contributed to a greater understanding of cellular physiology.

Synonyms:

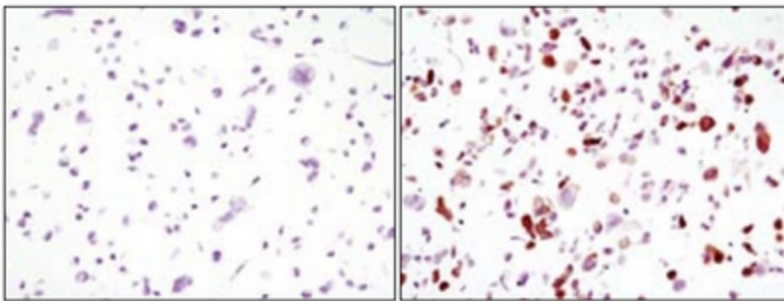
Green fluorescent protein, GFP-Tag

Product images:

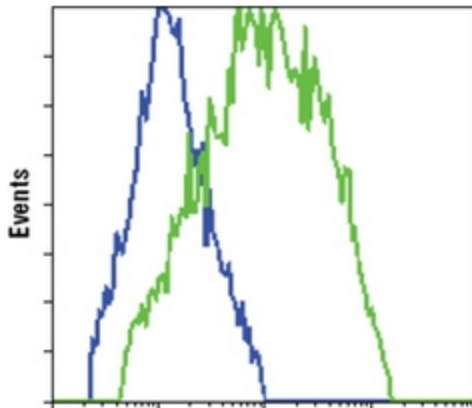
Western blot analysis using GFP antibody Cat.-No AM06180PU-N against recombinant GFP fusion protein (Lane 1) and various recombinant fusion protein with GFP tag (Lanes 2, 3, 4).



Western blot analysis using GFP antibody Cat.-No AM06180PU-N against extracts from HCC827 cells, untransfected (Lane 1) and transfected with GFP (Lane 2).



Immunocytochemistry analysis of HCC827 cells, untransfected (left) or transfected with GFP (right) using GFP antibody Cat.-No AM06180PU-N



Flow Cytometric analysis of HCC827 cells, untransfected (blue) or transfected with GFP (green), using GFP antibody Cat.-No AM06180PU-N