

## Product datasheet for **AM06174SU-N**

### **RSK1 p90 (RPS6KA1) Mouse Monoclonal Antibody [Clone ID: 10B1D7A9]**

#### **Product data:**

Product Type:	Primary Antibodies
Clone Name:	10B1D7A9
Applications:	ELISA, IHC, WB
Recommended Dilution:	<b>ELISA:</b> 1/10000. <b>Western Blotting:</b> 1/500 - 1/2000. <b>Immunohistochemistry on Paraffin Sections:</b> 1/200 - 1/1000.
Reactivity:	Human
Host:	Mouse
Isotype:	IgG2a
Clonality:	Monoclonal
Immunogen:	Purified recombinant fragment of human RSK1 expressed in E. Coli.
Specificity:	Recognizes RSK1
Formulation:	State: Ascites State: Ascitic fluid containing 0.03% Sodium Azide
Conjugation:	Unconjugated
Storage:	Store the antibody undiluted at 2-8°C for one month or (in aliquots) at -20°C for longer. Avoid repeated freezing and thawing.
Stability:	Shelf life: one year from despatch.
Gene Name:	ribosomal protein S6 kinase A1
Database Link:	<a href="#">Entrez Gene 6195 Human Q15418</a>



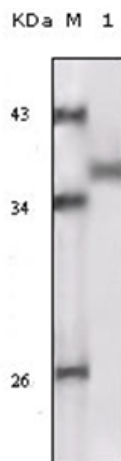
[View online »](#)

**Background:**

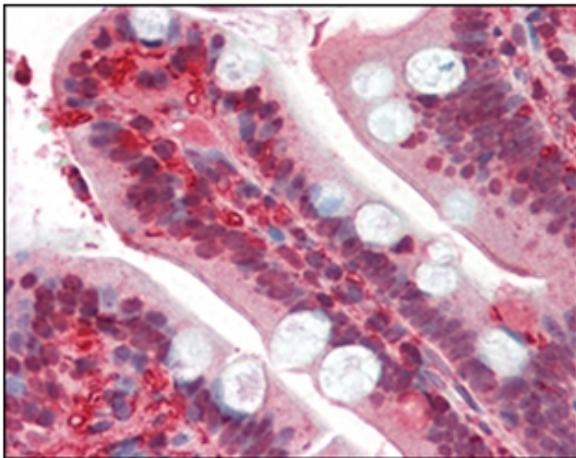
Rsk1 is a member of a family of 90kDa ribosomal protein S6 kinases, which includes Rsk1, Rsk2 and Rsk3. These are broadly expressed serine / threonine protein kinases activated in response to mitogenic stimuli, including extracellular signal regulated protein kinases Erk1 and Erk2. Rsk1 is activated by MAPK in vitro and in vivo via phosphorylation. Active Rsk1 appear to play a major role in transcriptional regulation by translocating to the nucleus and phosphorylating c-Fos and CREB. RSK proteins possess two separate kinase domains, the C terminal kinase domain and the N terminal kinase domain, separated by a linker region containing a hydrophobic motif. RSK is activated by many stimuli including growth factors, phorbol esters, cAMP, heat shock, and irradiation.

**Synonyms:**

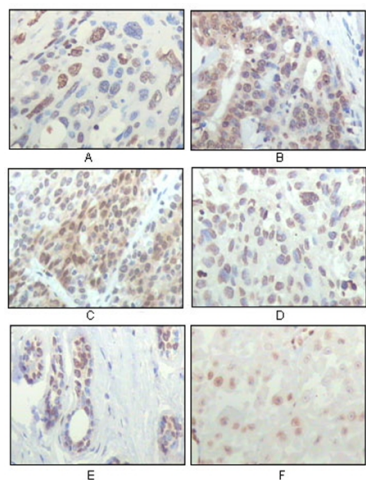
Ribosomal S6 kinase 1, 90 kDa ribosomal protein S6 kinase 1, MAPKAPK1A, RSK1, RSK-1, p90RSK1

**Product images:**

Western blot analysis using RSK1 antibody Cat.-No AM06174SU-N against truncated RSK1 recombinant protein.



Immunohistochemical analysis of paraffin-embedded human small intestine tissues using RSK1 antibody Cat.-No AM06174SU-N



Immunohistochemical analysis of paraffin-embedded human esophageal squamous cell carcinoma (A), colon adenocarcinoma (B), liver carcinoma (C), skin carcinoma (D), breast ductal tumor (E) and brain tumor (F), showing nuclear localization using RSK1 antibody Cat.-No AM06174SU-N with DAB staining.