

Product datasheet for **AM06171SU-N**

GSK3 alpha (GSK3A) Mouse Monoclonal Antibody [Clone ID: 9D5G1]

Product data:

Product Type:	Primary Antibodies
Clone Name:	9D5G1
Applications:	IF, WB
Recommended Dilution:	ELISA: 1/10000. Western Blotting: 1/500 - 1/2000. Immunofluorescence: 1/200 - 1/1000.
Reactivity:	Human
Host:	Mouse
Isotype:	IgG1
Clonality:	Monoclonal
Immunogen:	Purified recombinant fragment of GSK3 alpha expressed in E. Coli.
Specificity:	Recognizes Glycogen synthase kinase 3 alpha (GSK3 alpha)
Formulation:	State: Ascites State: Ascitic fluid containing 0.03% Sodium Azide.
Conjugation:	Unconjugated
Storage:	Store the antibody undiluted at 2-8°C for one month or (in aliquots) at -20°C for longer. Avoid repeated freezing and thawing.
Stability:	Shelf life: one year from despatch.
Gene Name:	glycogen synthase kinase 3 alpha
Database Link:	Entrez Gene 2931 Human P49840



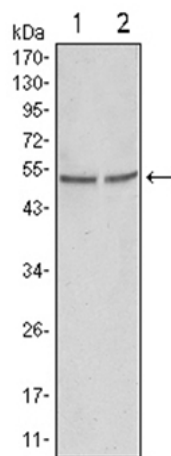
[View online »](#)

Background:

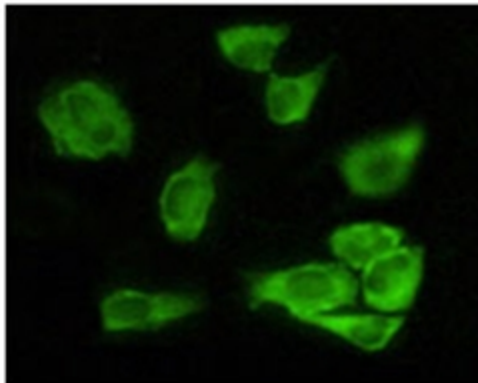
Glycogen synthase kinase 3 alpha belongs to the Ser/Thr family of protein kinases, Cdc2/cdkx subfamily; GSK3 subsubfamily. It is implicated in the hormonal control of several regulatory proteins including glycogen synthase, myb, and the transcription factor c jun. GSK3 phosphorylates glycogen synthase and thereby inactivates it. Insulin stimulates the dephosphorylation of glycogen synthase at the sites phosphorylated by GSK3 and subsequently inhibits GSK3 acutely leading to the stimulation of glycogen synthesis. GSK3 signaling is performed by two isoforms, GSK3 alpha and GSK3 beta. The two isoforms share 97% sequence similarity within their catalytic domains. GSK3 has also been shown to play a role in protein synthesis, cell adhesion, cell proliferation, cell differentiation, microtubule dynamics and cell motility.

Synonyms:

Glycogen synthase kinase-3 alpha, GSK3A, GSK-3 alpha, Factor A

Product images:

Western blot analysis using GSK3 alpha antibody Cat.-No AM06171SU-N against HeLa (1) and PC-3 cell lysate.



Immunofluorescence analysis of HeLa cells using GSK3 alpha antibody Cat.-No AM06171SU-N showing cytoplasmic localization.