

Product datasheet for **AM06169SU-N**

CD31 (PECAM1) Mouse Monoclonal Antibody [Clone ID: 2F7B2]

Product data:

Product Type:	Primary Antibodies
Clone Name:	2F7B2
Applications:	IF, IHC, WB
Recommended Dilution:	ELISA: 1/10000. Western Blot: 1/500 - 1/2000. Immunofluorescence: 1/200 - 1/1000. Immunohistochemistry on Paraffin Sections: 1/200 - 1/1000.
Reactivity:	Human
Host:	Mouse
Isotype:	IgG1
Clonality:	Monoclonal
Immunogen:	Purified recombinant fragment of Human CD31 expressed in E. Coli.
Specificity:	Recognizes CD31 / PECAM1.
Formulation:	State: Ascites State: Ascitic fluid containing 0.03% Sodium Azide
Conjugation:	Unconjugated
Storage:	Store the antibody undiluted at 2-8°C for one month or (in aliquots) at -20°C for longer. Avoid repeated freezing and thawing.
Stability:	Shelf life: one year from despatch.
Gene Name:	platelet and endothelial cell adhesion molecule 1
Database Link:	Entrez Gene 5175 Human P16284



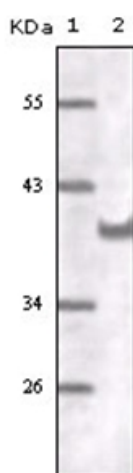
[View online »](#)

Background:

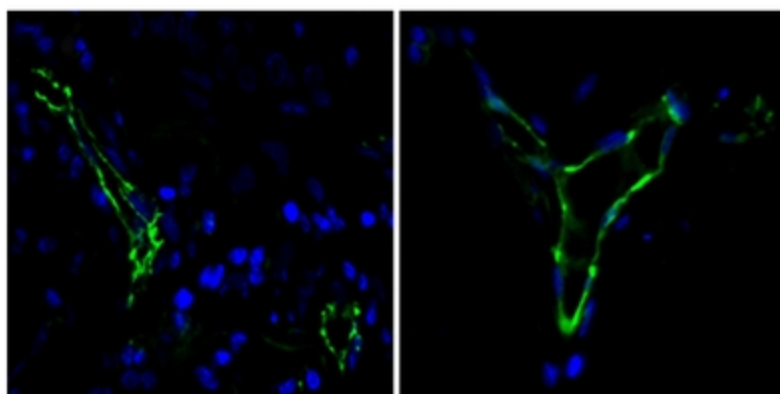
CD31, also known as platelet endothelial cell adhesion molecule 1 (PECAM1), is a type I integral membrane glycoprotein and a member of the immunoglobulin superfamily of cell surface receptors. It is constitutively expressed on the surface of endothelial cells, and concentrated at the junction between them. The antibody reacts with the murine form of the Platelet-Endothelial Cell Adhesion Molecule. The reactivity of the antibody is restricted to the isoform of the molecule that is selectively expressed by endothelial cells. The antigen is predominantly present at the lateral borders of endothelial cells as described for human PECAM-1. It is also weakly expressed on many peripheral lymphoid cells and platelets. CD31 has been used to measure angiogenesis in association with tumor recurrence. Other studies have also indicated that CD31 and CD34 can be used as markers for myeloid progenitor cells and recognize different subsets of myeloid leukemia infiltrates (granular sarcomas).

Synonyms:

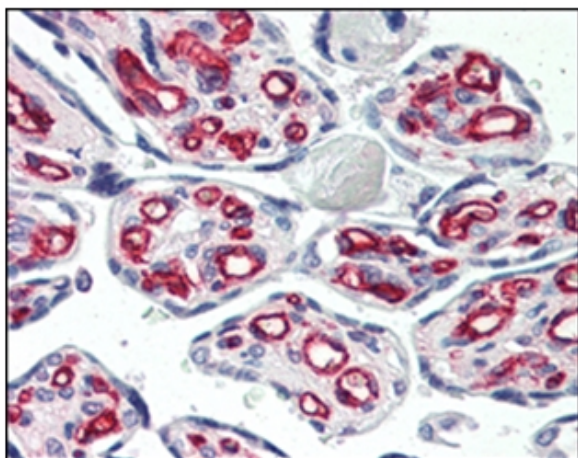
PECAM-1, EndoCAM, GPIIA'

Product images:

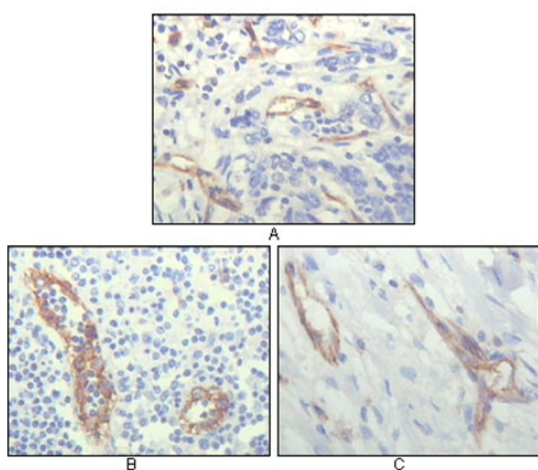
Western blot analysis using CD31 antibody Cat.-No AM06169SU-N against truncated CD31 recombinant protein.



Immunofluorescence analysis of paraffin-embedded human lung cancer (left) and breast cancer (right) cells using CD31 antibody Cat.-No AM06169SU-N (green). Blue: DRAQ5 fluorescent DNA dye.



Immunohistochemical analysis of paraffin-embedded human placenta using CD31 antibody Cat.-No AM06169SU-N



Immunohistochemical analysis of paraffin-embedded human lung cancer (A), lymphonodus tissue (B) and breast cancer (C), showing cytoplasmic localization of vascular endothelial cells using CD31 antibody Cat.-No AM06169SU-N with DAB staining.