

## Product datasheet for **AM06167SU-N**

### Her2 (ERBB2) Mouse Monoclonal Antibody [Clone ID: 9B9D8]

#### Product data:

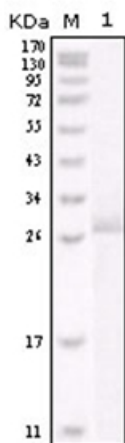
Product Type:	Primary Antibodies
Clone Name:	9B9D8
Applications:	IHC, WB
Recommended Dilution:	<b>Western Blot:</b> 1/500 - 1/2000. <b>ELISA:</b> 1/10000. <b>Immunohistochemistry on Paraffin Sections:</b> 1/200 - 1/1000.
Reactivity:	Human
Host:	Mouse
Isotype:	IgG2b
Clonality:	Monoclonal
Immunogen:	Purified recombinant fragment of HER-2 expressed in E. Coli.
Specificity:	Recognizes C-erbB-2 (HER-2/neu).
Formulation:	State: Ascites State: Ascitic fluid containing 0.03% Sodium Azide
Conjugation:	Unconjugated
Storage:	Store the antibody undiluted at 2-8°C for one month or (in aliquots) at -20°C for longer. Avoid repeated freezing and thawing.
Stability:	Shelf life: one year from despatch.
Gene Name:	erb-b2 receptor tyrosine kinase 2
Database Link:	<a href="#">Entrez Gene 2064 Human P04626</a>
Background:	The C-erbB-2 (HER-2/neu) gene encodes a member of the epidermal growth factor (EGF) receptor family of receptor tyrosine kinases. Amplification or overexpression of this gene has been reported in numerous cancers, including breast and ovarian tumors. High levels of c-erbB-2 were associated with estrogen receptor (ER) and progesterone receptor negativity. Overexpression of the c-erbB-2 oncogene has been shown to be associated with poor prognosis in ovarian and breast cancer. The level of increased Neu expression can be a predictor of disease prognosis



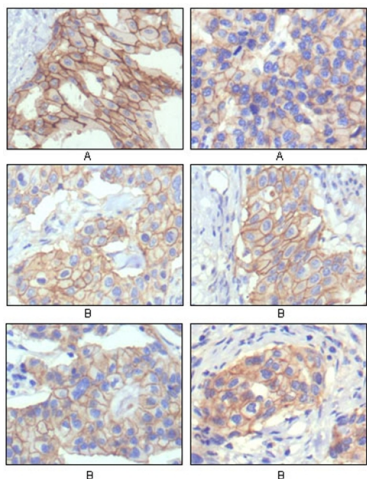
[View online »](#)

**Synonyms:** HER-2, NEU, p185erbB2, NGL, c-erbB-2, MNL19

**Product images:**



Western blot analysis using HER-2 antibody Cat.-No AM06167SU-N against truncated HER-2 recombinant protein.



Immunohistochemical analysis of paraffin-embedded human breast intraductal carcinoma tissue (A) and breast infiltrating ductal carcinoma tissue (B) showing membrane localization using HER-2 antibody Cat.-No AM06167SU-N with DAB staining.