

Product datasheet for **AM06165SU-N**

ABL2 Mouse Monoclonal Antibody [Clone ID: 1H1B11]

Product data:

| | |
|-----------------------|---|
| Product Type: | Primary Antibodies |
| Clone Name: | 1H1B11 |
| Applications: | ELISA, IF, WB |
| Recommended Dilution: | ELISA: 1/10000. Western Blot: 1/500 - 1/2000. Immunofluorescence: 1/200-1/1000. |
| Reactivity: | Human |
| Host: | Mouse |
| Isotype: | IgG1 |
| Clonality: | Monoclonal |
| Immunogen: | Purified recombinant fragment of ABL2 expressed in E. Coli. |
| Specificity: | Recognizes ABL2 (ARG, Abelson-related gene). |
| Formulation: | State: Ascites State: Ascitic fluid containing 0.03% Sodium Azide |
| Conjugation: | Unconjugated |
| Storage: | Store the antibody undiluted at 2-8°C for one month or (in aliquots) at -20°C for longer. Avoid repeated freezing and thawing. |
| Stability: | Shelf life: one year from despatch. |
| Gene Name: | ABL proto-oncogene 2, non-receptor tyrosine kinase |
| Database Link: | Entrez Gene 27 Human P42684 |



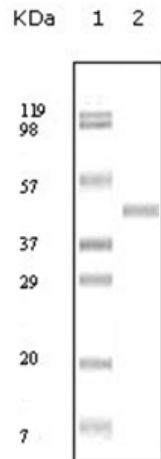
[View online »](#)

Background:

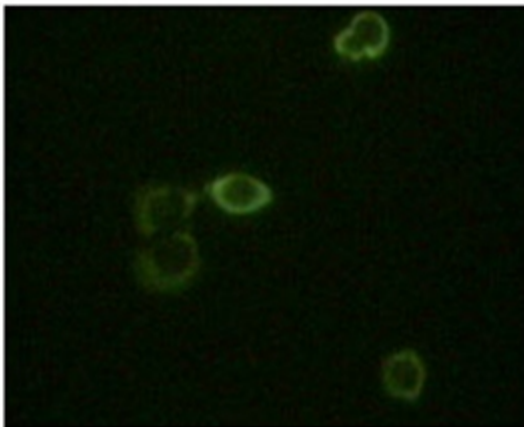
ABL2 (ARG, Abelson-related gene) is a cytoplasmic tyrosine kinase which is closely related to but distinct from ABL1. The similarity of the proteins includes the tyrosine kinase domains and extends amino-terminal to include the SH2 and SH3 domains. ABL2 is expressed in both normal and tumor cells. The ABL2 gene product is expressed as two variants bearing different amino termini, both approximately 12-kb in length. c-Abl shows both cytoplasmic and nuclear localization. c-Abl is involved in two different chromosomal translocations present in human leukemias, which generate Bcr-Abl and TEL-Abl.

Synonyms:

ABL2, ARG

Product images:


Western blot analysis using ABL2 Cat.-No AM06165SU-N against truncated ABL2 recombinant protein.



Immunofluorescence staining of methanol-fixed HeLa cells using ABL2 antibody Cat.-No AM06165SU-N showing cytoplasm localization.