

Product datasheet for **AM06164SU-N**

LYN Mouse Monoclonal Antibody [Clone ID: 2H8D7]

Product data:

Product Type:	Primary Antibodies
Clone Name:	2H8D7
Applications:	WB
Recommended Dilution:	Western Blot: 1/500 - 1/2000. ELISA: 1/10000.
Reactivity:	Human
Host:	Mouse
Isotype:	IgG2b
Clonality:	Monoclonal
Immunogen:	Purified recombinant fragment of LYN expressed in E. Coli.
Specificity:	Recognizes LYN (also known as p53/56 Lyn).
Formulation:	State: Ascites State: Ascitic fluid containing 0.03% Sodium Azide
Conjugation:	Unconjugated
Storage:	Store the antibody undiluted at 2-8°C for one month or (in aliquots) at -20°C for longer. Avoid repeated freezing and thawing.
Stability:	Shelf life: one year from despatch.
Gene Name:	LYN proto-oncogene, Src family tyrosine kinase
Database Link:	Entrez Gene 4067 Human P07948



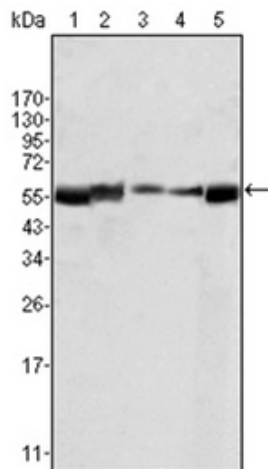
[View online »](#)

Background:

Lyn (also known as p53/56 Lyn) is a membrane-associated protein tyrosine kinase (PTK) mostly expressed in hemopoietic cells which is important in cellular signaling. It contains an SH2 and SH3 domain and has been found to be cleaved after activation of caspases in apoptosis. A member of the Src family of PTKs, there are two known isoforms for Lyn which plays an indispensable role in the Fc epsilon RI (FceR1) and the B-cell IgM receptor signaling pathway and is essential for Syk activation and Lat phosphorylation after FceR1 aggregation and can also phosphorylate Tec on multiple residues. Lyn can also be regulated by IL-2 and IL-3. Lyn is a member of the src family of non-receptor protein tyrosine kinases that is predominantly expressed in haematopoietic tissues. Like all members of the src family, lyn is thought to participate in signal transduction from cell surface receptors that lack intrinsic tyrosine kinase activity. It is associated with a number of cell surface receptors including the B cell antigen receptor and immunoglobulin E receptor (FceRI).

Synonyms:

Tyrosine-protein kinase Lyn

Product images:

Western blot analysis using LYN antibody Cat.-No AM06164SU-N againsts HL60 (Lane 1), L540 (Lane 2), SLLP-M2 (Lane 3), SEM (Lane 4) and Ramos (Lane 5) cell lysate.