

Product datasheet for **AM06161SU-N**

S100A10 Mouse Monoclonal Antibody [Clone ID: 4E7E10]

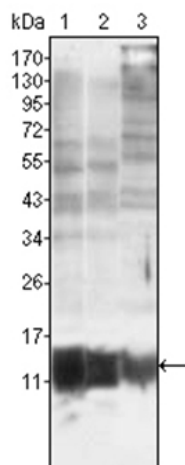
Product data:

Product Type:	Primary Antibodies
Clone Name:	4E7E10
Applications:	IF, IHC, WB
Recommended Dilution:	ELISA: 1/10000. Western Blot: 1/500 - 1/2000. Immunofluorescence: 1/200 - 1/1000. Immunohistochemistry on Paraffin Sections: 1/200 - 1/1000.
Reactivity:	Human
Host:	Mouse
Isotype:	IgG1
Clonality:	Monoclonal
Immunogen:	Purified recombinant fragment of Human P11 expressed in E. Coli.
Specificity:	Recognizes S100 calcium binding protein A10 (S100A10/P11)
Formulation:	State: Ascites State: Ascitic fluid Preservative: 0.03% Sodium Azide
Storage:	Store the antibody undiluted at 2-8°C for one month or (in aliquots) at -20°C for longer. Avoid repeated freezing and thawing.
Stability:	Shelf life: one year from despatch.
Database Link:	Entrez Gene 6281 Human
Background:	S100 calcium binding protein A10 (S100A10/P11), it is a member of the S100 family of proteins containing 2 EF-hand calcium-binding motifs. S100 proteins are localized in the cytoplasm and/or nucleus of a wide range of cells, and involved in the regulation of a number of cellular processes such as cell cycle progression and differentiation. S100 genes include at least 13 members which are located as a cluster on chromosome 1q21. This protein may function in exocytosis and endocytosis.
Synonyms:	S100-A10, ANX2LG, CAL1L, CLP11, Calpactin-1 light chain

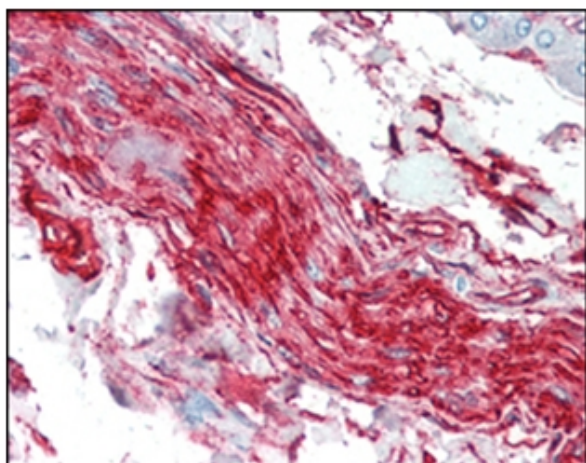


[View online »](#)

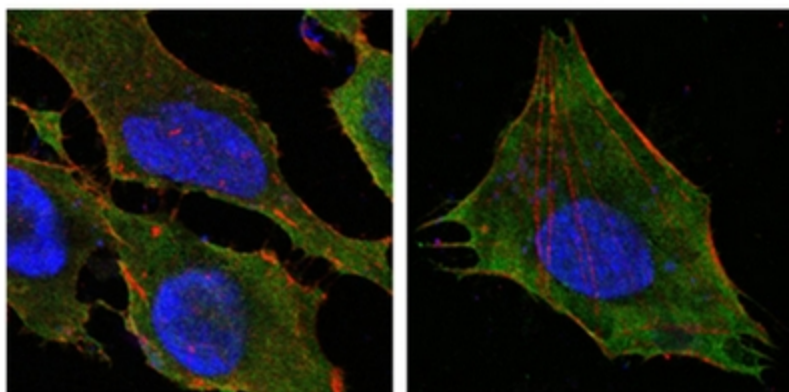
Product images:



Western blot analysis using S100A10/P11 antibody Cat.-No AM06161SU-N against MCF-7 (Lane 1), HepG2 (Lane 2) and HeLa (Lane 3).



Immunohistochemical analysis of paraffin-embedded human nerve and ganglion cells using S100A10/P11 antibody Cat.-No AM06161SU-N



Confocal immunofluorescence analysis of HeLa (left) and L-02 (right) cells using S100A10/P11 antibody Cat.-No AM06161SU-N (green). Red: Actin filaments have been labeled with DY-554 phalloidin. Blue: DRAQ5 fluorescent DNA dye.