

Product datasheet for **AM06160SU-N**

S100A1 Mouse Monoclonal Antibody [Clone ID: 2C8B8]

Product data:

Product Type:	Primary Antibodies
Clone Name:	2C8B8
Applications:	IHC, WB
Recommended Dilution:	ELISA: 1/10000. Western Blot: 1/500 - 1/2000. Immunohistochemistry on Paraffin Sections: 1/200 - 1/1000.
Reactivity:	Human
Host:	Mouse
Isotype:	IgG1
Clonality:	Monoclonal
Immunogen:	Purified recombinant fragment of S100A1 expressed in E. Coli.
Specificity:	Recognizes S100 calcium binding protein A1 (S100-alpha/ S100A1).
Formulation:	State: Ascites State: Ascitic fluid Preservative: 0.03% Sodium Azide
Conjugation:	Unconjugated
Storage:	Store the antibody undiluted at 2-8°C for one month or (in aliquots) at -20°C for longer. Avoid repeated freezing and thawing.
Stability:	Shelf life: one year from despatch.
Gene Name:	S100 calcium binding protein A1
Database Link:	Entrez Gene 6271 Human P23297



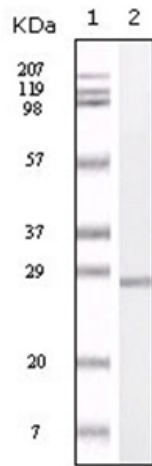
[View online »](#)

Background:

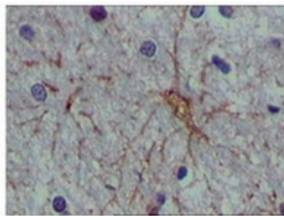
S100 calcium binding protein A1 (S100-alpha/ S100A1), it is a member of the S100 family of proteins containing 2 EF-hand calcium-binding motifs. S100 proteins are localized in the cytoplasm and/or nucleus of a wide range of cells, and involved in the regulation of a number of cellular processes such as cell cycle progression and differentiation. S100 genes include at least 13 members which are located as a cluster on chromosome 1q21. This protein may function in stimulation of Ca²⁺-induced Ca²⁺ release, inhibition of microtubule assembly, and inhibition of protein kinase C-mediated phosphorylation. Reduced expression of this protein has been implicated in cardiomyopathies.

Synonyms:

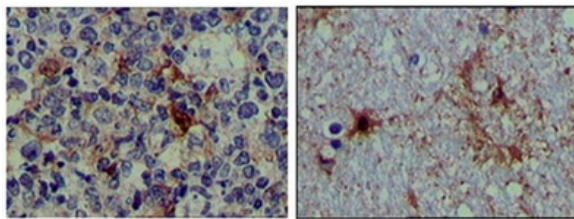
S100-A1, S100A, S100 alpha, S100 calcium-binding protein A1, S-100 protein subunit alpha, S-100 protein alpha chain

Product images:


Western blot analysis using S100A antibody Cat.-No AM06160SU-N against truncated S100A recombinant protein.



A



B

C

Immunohistochemical analysis of paraffin-embedded human brain tissue (A), lymphoid follicles tissue (B) and interbrain tissue (C), showing cytoplasmic localization using S100A antibody Cat.-No AM06160SU-N with DAB staining.