

## Product datasheet for **AM06157PU-N**

### **Apolipoprotein M (APOM) Mouse Monoclonal Antibody [Clone ID: 8F12C6B8]**

#### **Product data:**

Product Type:	Primary Antibodies
Clone Name:	8F12C6B8
Applications:	IF, WB
Recommended Dilution:	<b>ELISA:</b> 1/10000. <b>Western Blot:</b> 1/500 - 1/2000. <b>Immunofluorescence:</b> 1/200 - 1/1000.
Reactivity:	Human
Host:	Mouse
Isotype:	IgG1
Clonality:	Monoclonal
Immunogen:	Purified recombinant fragment of Human ApoM expressed in E. Coli.
Specificity:	Recognizes ApoM (Apolipoprotein M).
Formulation:	PBS State: Purified State: Liquid purified IgG fraction Preservative: 0.03% Sodium Azide
Conjugation:	Unconjugated
Storage:	Store the antibody undiluted at 2-8°C for one month or (in aliquots) at -20°C for longer. Avoid repeated freezing and thawing.
Stability:	Shelf life: one year from despatch.
Predicted Protein Size:	21 kDa
Gene Name:	apolipoprotein M
Database Link:	<a href="#">Entrez Gene 55937 Human O95445</a>



[View online »](#)

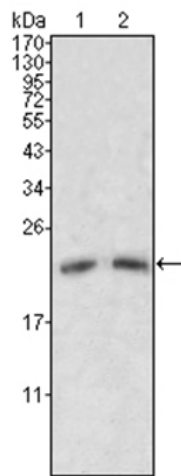
**Background:**

ApoM (Apolipoprotein M, also designated G3a or NG20), with 188-amino acid protein (about 21kDa), is an apolipoprotein and member of the lipocalin protein family. The Apo-proteins are involved in the specific binding of cellular receptors, the regulation of lipolytic enzymes, and the process of lipid exchange. The encoded protein is secreted through the plasma membrane but remains membrane-bound, where it is involved in lipid transport. The N-terminal region of Apo-M contains hydrophobic residues that may promote association with the phospholipid layer of lipoprotein particles. In vitro, Apo-M is glycosylated when translated in the presence of microsomes, and remains associated with the microsomes after carbonate treatment. Apo-M is expressed in liver and kidney, and is secreted into the bloodstream in HDLs, and also found in triglyceride-rich lipoproteins and LDLs.

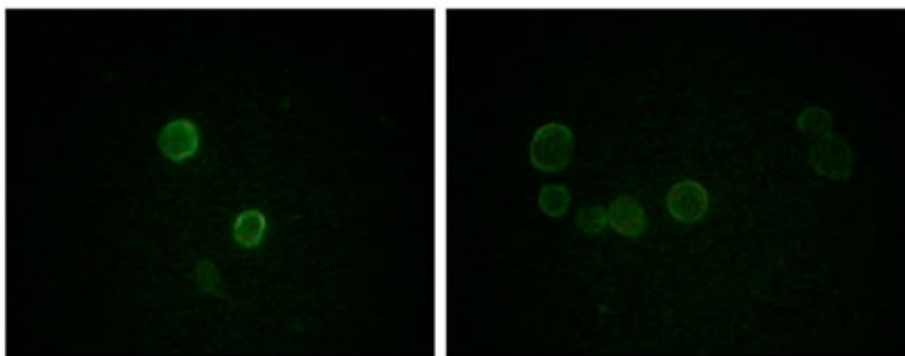
**Synonyms:**

Apo-M, ApoM, Protein G3A, NG20, HSPC336

**Product images:**



Western blot analysis using ApoM antibody Cat.-No AM06157PU-N against Human Serum (1, 2).



Immunofluorescence analysis of methanol-fixed L-02 (left) and Cos7 (right) cells using ApoM antibody Cat.-No AM06157PU-N showing cytoplasmic and membrane localization.