

## Product datasheet for **AM06155SU-N**

### **IKK beta (IKBKB) Mouse Monoclonal Antibody [Clone ID: 10A2C5B3]**

#### **Product data:**

Product Type:	Primary Antibodies
Clone Name:	10A2C5B3
Applications:	IHC, WB
Recommended Dilution:	<b>ELISA:</b> 1/10000. <b>Western Blot:</b> 1/500 - 1/2000. <b>Immunohistochemistry on Paraffin Sections:</b> 1/200 - 1/1000.
Reactivity:	Human
Host:	Mouse
Isotype:	IgG1
Clonality:	Monoclonal
Immunogen:	Purified recombinant fragment of IKBKB expressed in E. Coli.
Specificity:	Recognizes IKBKB.
Formulation:	State: Ascites State: Ascitic fluid containing 0.03% Sodium Azide.
Conjugation:	Unconjugated
Storage:	Store the antibody undiluted at 2-8°C for one month or (in aliquots) at -20°C for longer. Avoid repeated freezing and thawing.
Stability:	Shelf life: one year from despatch.
Gene Name:	inhibitor of kappa light polypeptide gene enhancer in B-cells, kinase beta
Database Link:	<a href="#">Entrez Gene 3551 Human O14920</a>



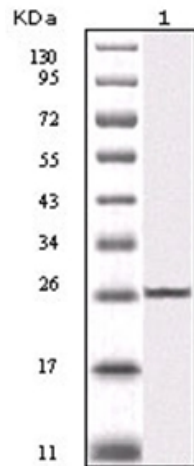
[View online »](#)

**Background:**

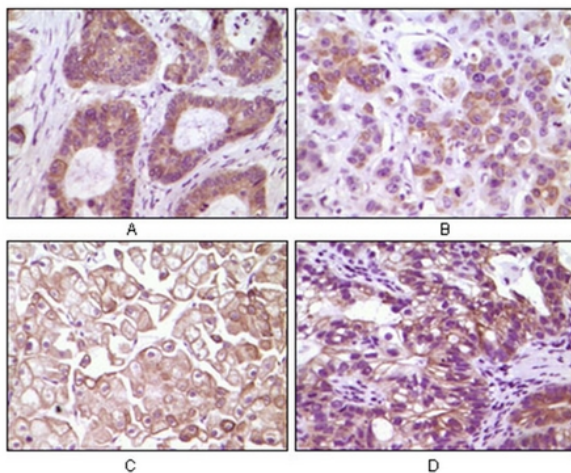
IKKB (Inhibitor of kappa light polypeptide gene enhancer in B-cells, kinase beta, also called IKK2/IKKB), is a member of the IKK complex which is composed of IKK-alpha, IKK-beta, IKK-gamma and IKAP. Phosphorylation of I-Kappa-B on a serine residue by the IKK complex frees NF-kB from I-Kappa-B and marks it for degradation via ubiquitination. IKK-beta has been shown to activate NF-kB and phosphorylate IKB-alpha and beta. Phosphorylation of 2 sites at the activation loop of IKK-beta is essential for activation of IKK by TNF and IL1. Once activated, IKK-beta autophosphorylates which in turn decreases IKK activity and prevents prolonged activation of the inflammatory response. Additionally, IKK-beta activity can also be regulated by MEKK-1.

**Synonyms:**

I-kappa-B-kinase beta, IKK-beta, IKK-B, I-kappa-B kinase 2, IKK2, NFKBIKB

**Product images:**


Western blot analysis using IKKB antibody Cat.-No AM06155SU-N against truncated IKKB recombinant protein (Lane 1).



Immunohistochemical analysis of paraffin-embedded human colon carcinoma (A), breast carcinoma (B), kidney cell carcinoma (C), bladder carcinoma tumor (D), showing membrane and cytoplasmic localization using IKKB antibody Cat.-No AM06155SU-N with DAB staining.