

Product datasheet for **AM06151PU-N**

Inhibin alpha (INHA) Mouse Monoclonal Antibody [Clone ID: 4A2]

Product data:

Product Type:	Primary Antibodies
Clone Name:	4A2
Applications:	IF, IHC
Recommended Dilution:	ELISA: 1/10000. Immunofluorescence: 1/200 - 1/1000. Immunohistochemistry on Paraffin Sections: 1/200 - 1/1000.
Reactivity:	Human
Host:	Mouse
Isotype:	IgG1
Clonality:	Monoclonal
Immunogen:	Purified recombinant fragment of human INHA expressed in E. Coli.
Specificity:	Recognizes INHA (A-Inhibin subunit precursor, inhibin alpha subunit).
Formulation:	PBS State: Purified State: Liquid purified IgG fraction Preservative: 0.03% Sodium Azide
Conjugation:	Unconjugated
Storage:	Store the antibody undiluted at 2-8°C for one month or (in aliquots) at -20°C for longer. Avoid repeated freezing and thawing.
Stability:	Shelf life: one year from despatch.
Gene Name:	inhibin alpha subunit
Database Link:	Entrez Gene 3623 Human P05111



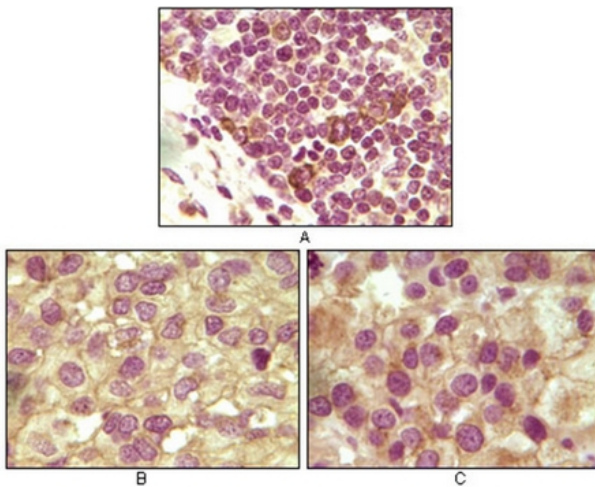
[View online »](#)

Background:

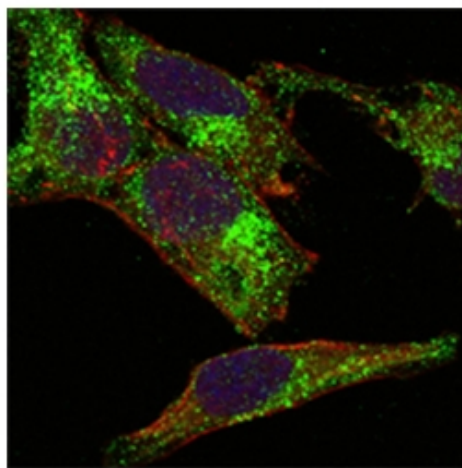
INHA (A-inhibin subunit precursor, inhibin alpha subunit), also called inhibin (alpha), which is located on chromosome 2q33-q36. Inhibin is a gonadal protein that preferentially suppresses the secretion of pituitary follicle-stimulating hormone (FSH). Inhibin comprises of two subunits, Inhibin A and B. Inhibin has been shown to regulate gonadal stromal cell proliferation negatively and to have tumor suppressor activity. In addition, serum levels of inhibin have been shown to reflect the size of granulosa cell tumors and can therefore be used as a marker for primary as well as recurrent disease. In addition to their role in endocrine feedback in the reproductive system, inhibins subserve local regulatory roles in numerous extragonadal tissues, including brain, adrenal, bone marrow, placenta, and most notably anterior pituitary. Inhibin alpha subunit gene expression is down regulated in human prostate cancer, suggesting a tumor suppressive role.

Synonyms:

INHA

Product images:


Immunohistochemical analysis of paraffin-embedded human lymphoid (A), ovary tumor (B) and testicle tumor (C) tissues using INHA antibody Cat.-No AM06151PU-N with DAB staining.



Confocal immunofluorescence analysis of HeLa cells using INHA antibody Cat.-No AM06151PU-N (green). Red: Actin filaments have been labeled with DY-554 phalloidin. Blue: DRAQ5 fluorescent DNA dye.