

## Product datasheet for **AM06149SU-N**

### EIF4EBP1 Mouse Monoclonal Antibody [Clone ID: 4B6G10]

#### Product data:

Product Type:	Primary Antibodies
Clone Name:	4B6G10
Applications:	IHC, WB
Recommended Dilution:	<b>ELISA:</b> 1/10000 <b>Western Blot:</b> 1/500 - 1/2000. <b>Immunohistochemistry on Paraffin Sections:</b> 1/200 - 1/1000.
Reactivity:	Human
Host:	Mouse
Isotype:	IgG1
Clonality:	Monoclonal
Immunogen:	Purified recombinant fragment of 4E-BP1 expressed in E. Coli.
Specificity:	Recognizes 4E-BP1
Formulation:	State: Ascites State: Ascitic fluid Preservative: 0.03% Sodium Azide
Conjugation:	Unconjugated
Storage:	Store the antibody undiluted at 2-8°C for one month or (in aliquots) at -20°C for longer. Avoid repeated freezing and thawing.
Stability:	Shelf life: one year from despatch.
Gene Name:	eukaryotic translation initiation factor 4E binding protein 1
Database Link:	<a href="#">Entrez Gene 1978 Human Q13541</a>



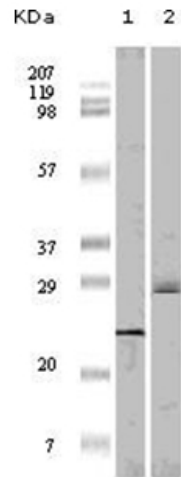
[View online »](#)

**Background:**

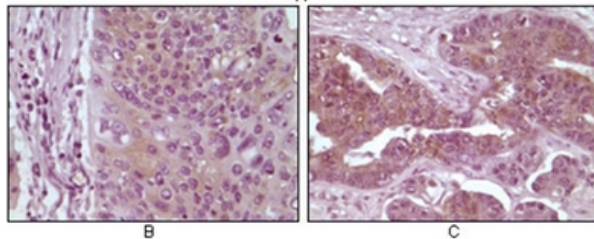
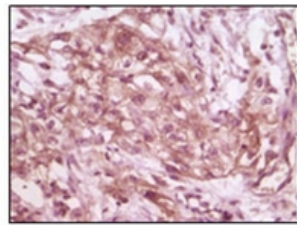
4E-BP1 (eukaryotic translation Initiation Factor 4E Binding Protein 1), also called ELF4EBP1/BP-1/PHAS-I, which is located on chromosome 8p12, with 118-amino acid protein (about 13kDa). Binding of eIF4EBP1 to eIF4E is reversible and is dependent on the phosphorylation status of eIF4EBP1. Non phosphorylated eIF4EBP1 will bind strongly to eIF4E while (24kDa), the phosphorylated form will not. Akt, TOR, MAP kinase, S6 kinase, and Cdc2 are known kinases capable of inactivating eIF4EBP1 binding to eIF4E by phosphorylating either threonines 35, 45, 69 or serine 64. Although, not all phosphorylation events equally block the eIF4EBP1-eIF4E interaction.

**Synonyms:**

PHAS-I, PHAS-1, PHAS1

**Product images:**


Western blot analysis using 4E-BP1 antibody Cat.-No AM06149SU-N against truncated 4E-BP1 recombinant protei (Lane 1) and A431 cell lysate (Lane 2).



Immunohistochemical analysis of paraffin-embedded human pancreas carcinoma (A), esophagus carcinoma tissue (B) and ovary tumor tissue (C), showing cytoplasmic and membrane localization using 4E-BP1 antibody Cat.-No AM06149SU-N with DAB staining.