

Product datasheet for **AM06145SU-N**

GST3 (GSTP1) Mouse Monoclonal Antibody [Clone ID: 3F2C2]

Product data:

Product Type:	Primary Antibodies
Clone Name:	3F2C2
Applications:	ELISA, FC, IF, IHC, WB
Recommended Dilution:	ELISA: 1/10000. Western Blot: 1/500-1/2000. Immunofluorescence: 1/200-1/1000. Flow Cytometry: 1/200-1/400. Immunohistochemistry on Paraffin Sections: 1/200-1/1000.
Reactivity:	Human
Host:	Mouse
Isotype:	IgG1
Clonality:	Monoclonal
Immunogen:	Purified recombinant fragment of Human GSTP1 expressed in E. Coli.
Specificity:	Recognizes GSTP1 (glutathione-S-transferase, pi 1).
Formulation:	State: Ascites State: Ascitic fluid Preservative: 0.03% Sodium Azide
Conjugation:	Unconjugated
Storage:	Store undiluted at 2-8°C for one month or (in aliquots) at -20°C for longer. Avoid repeated freezing and thawing.
Stability:	Shelf life: one year from despatch.
Predicted Protein Size:	23 kDa
Gene Name:	glutathione S-transferase pi 1
Database Link:	Entrez Gene 2950 Human P09211



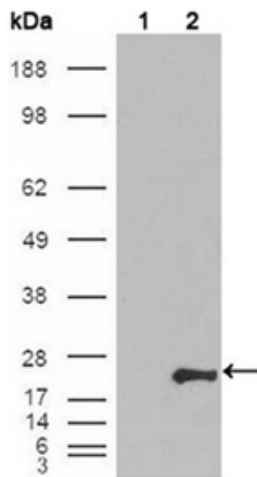
[View online »](#)

Background:

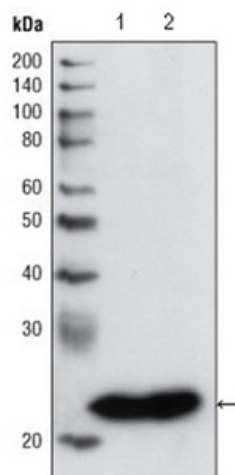
GSTP1 (glutathione-S-transferase, pi 1), also called GST3/DFN7, is a family of enzymes that play an important role in detoxification by catalyzing the conjugation of many hydrophobic and electrophilic compounds with reduced glutathione. GSTP1 act like a tumor suppressor gene, which when inactivated leads to tumor growth, and the -class glutathione S-transferase is commonly inactivated by somatic CpGisland hypermethylation in cancers of the prostate, liver, and breast. Methylation of regulatory sequences at the GSTP1 gene locus is found in the vast majority (>90%) of prostate carcinomas and is associated with transcriptional down-regulation.

Synonyms:

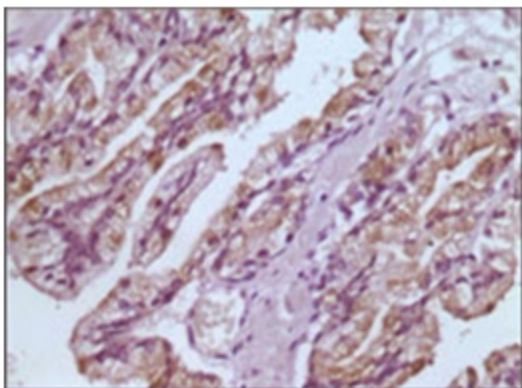
Glutathione S-transferase P, GSTP1-1, GST pi, GST class-pi, FAEES3

Product images:


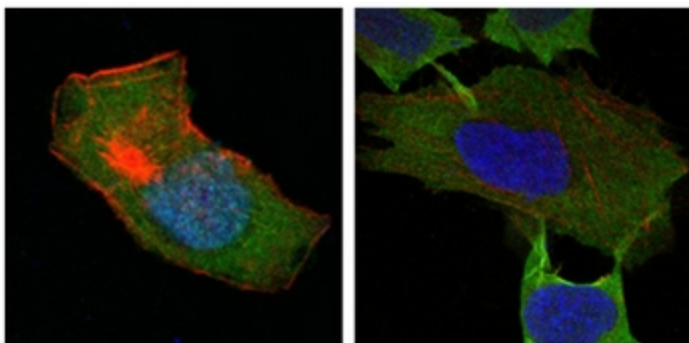
Western blot analysis using GSTP1 antibody Cat.-No AM06145SU-N against HEK293T cells transfected with the pCMV6-ENTRY control (Lane 1) and pCMV6-ENTRY GSTP1 cDNA (Lane 2).



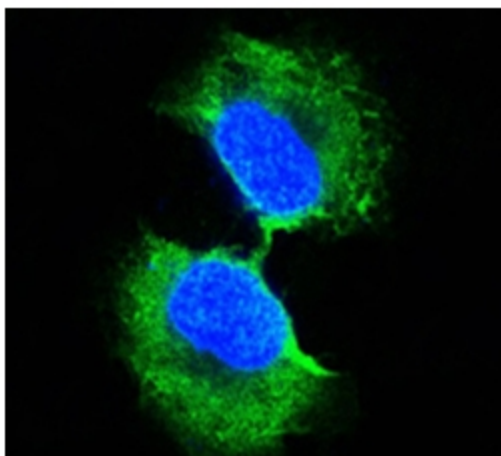
Western blot analysis using GSTP1 antibody Cat.-No AM06145SU-N against PC3 cell lysate (Lane 1) and human cerebellum tissue lysate (Lane 2).



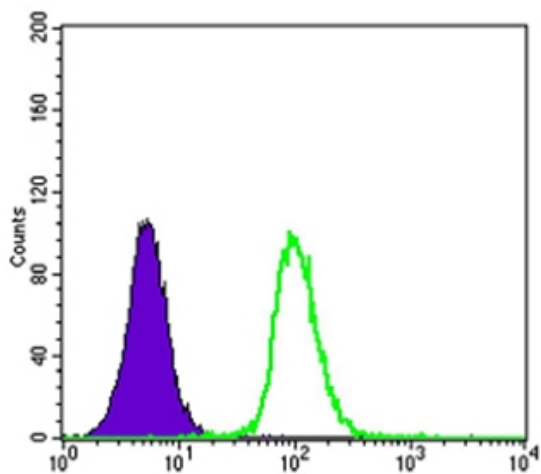
Immunohistochemical analysis of paraffin-embedded human prostate tissues using GSTP1 antibody Cat.-No with DAB staining.



Confocal immunofluorescence analysis of HepG2 (left) and L-02 (right) cells using GSTP1 antibody Cat.-No AM06145SU-N (green). Red: Actin filaments have been labeled with DY-554 phalloidin. Blue: DRAQ5 fluorescent DNA dye.



Confocal immunofluorescence analysis of PC-3 cells using GSTP1 antibody Cat.-No AM06145SU-N (green). Blue: DRAQ5 fluorescent DNA dye.



Flow Cytometric analysis of K562 cells using GSTP1 antibody Cat.-No AM06145SU-N (green) and Negative Control (purple).