

## Product datasheet for **AM06142PU-N**

### Desmin (DES) Mouse Monoclonal Antibody [Clone ID: 10H7D2]

#### Product data:

|                       |   |
|-----------------------|---|
| Product Type:         | Primary Antibodies  |
| Clone Name:           | 10H7D2  |
| Applications:         | ELISA, IHC, WB  |
| Recommended Dilution: | <b>ELISA:</b> 1/10000.<br><b>Western Blot:</b> 1/500 - 1/2000.<br><b>Immunohistochemistry on Paraffin Sections:</b> 1/200 - 1/1000. |
| Reactivity:           | Human   |
| Host:                 | Mouse   |
| Isotype:              | IgG1  |
| Clonality:            | Monoclonal  |
| Immunogen:            | Purified recombinant fragment of Desmin expressed in E. Coli.   |
| Specificity:          | Recognizes Desmin (DES).  |
| Formulation:          | PBS<br>State: Purified<br>State: Liquid purified IgG fraction<br>Preservative: 0.03% Sodium Azide                                   |
| Conjugation:          | Unconjugated  |
| Storage:              | Store the antibody undiluted at 2-8°C for one month or (in aliquots) at -20°C for longer.<br>Avoid repeated freezing and thawing.   |
| Stability:            | Shelf life: one year from despatch.   |
| Gene Name:            | desmin  |
| Database Link:        | <a href="#">Entrez Gene 1674 Human P17661</a>   |



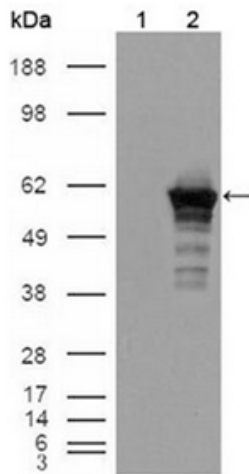
[View online »](#)

**Background:**

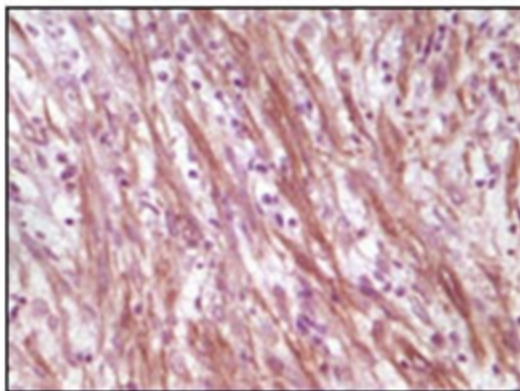
Desmin (DES), with 470-amino acid protein (about 52kDa), belongs to the intermediate filament family and Desmin is class III intermediate filaments found in muscle cells. Homopolymers of Desmin form a stable intracytoplasmic filamentous network connecting myofibrils to each other and to the plasma membrane. Mutations in Desmin are associated with desmin-related myopathy, a familial cardiac and skeletal myopathy (CSM), and with distal myopathies. Desmin is also expressed in smooth muscle cells of both airways and alveolar ducts and Desmin is a load-bearing protein that stiffens the airways and consequently the lung and modulates airway contractile response.

**Synonyms:**

DES

**Product images:**


Western blot analysis using Desmin antibody Cat.-No AM06142PU-N against HEK293T cells transfected with the pCMV6-ENTRY control (Lane 1) and pCMV6-ENTRY Desmin cDNA (Lane 2).



Immunohistochemical analysis of paraffin-embedded human smooth muscle sarcoma, showing cytoplasmic localization using Desmin antibody Cat.-No AM06142PU-N with DAB staining.