

Product datasheet for **AM06141PU-N**

Myoglobin (MB) Mouse Monoclonal Antibody [Clone ID: 6H8B5]

Product data:

Product Type:	Primary Antibodies
Clone Name:	6H8B5
Applications:	ELISA, IHC, WB
Recommended Dilution:	ELISA: 1/10000. Western Blot: 1/500 - 1/2000. Immunohistochemistry on Paraffin Sections: 1/200 - 1/1000.
Reactivity:	Human
Host:	Mouse
Isotype:	IgG1
Clonality:	Monoclonal
Immunogen:	Purified recombinant fragment of Myoglobin expressed in E. Coli.
Specificity:	Recognizes Myoglobin (MB).
Formulation:	PBS State: Purified State: Liquid purified IgG fraction Preservative: 0.03% Sodium Azide
Conjugation:	Unconjugated
Storage:	Store the antibody undiluted at 2-8°C for one month or (in aliquots) at -20°C for longer. Avoid repeated freezing and thawing.
Stability:	Shelf life: one year from despatch.
Gene Name:	myoglobin
Database Link:	Entrez Gene 4151 Human P02144



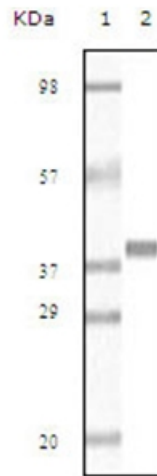
[View online »](#)

Background:

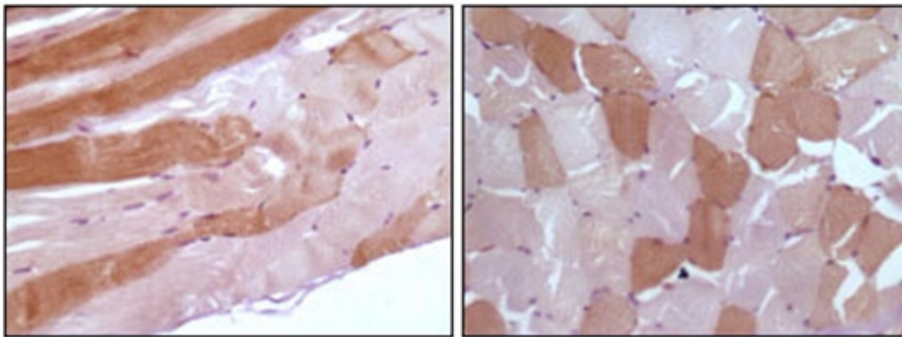
Myoglobin (MB), with 154-amino acid protein (about 17kDa), is a member of the globin superfamily and expression of myoglobin is highest in skeletal and cardiac muscle. Functionally, myoglobin is well accepted as an O₂-storage protein in muscle, capable of releasing O₂ during periods of hypoxia or anoxia. Myoglobin is also thought to buffer intracellular O₂ concentration when muscle activity increases and to facilitate intracellular O₂ diffusion by providing a parallel path that augments simple diffusion of dissolved O₂. Furthermore, myoglobin is used together with cTnI or cTnT in clinical practise for better specificity in AMI diagnosis.

Synonyms:

MB

Product images:

Western blot analysis using Myoglobin antibody Cat.-No AM06141PU-N against truncated Myoglobin recombinant protein (AA: 2-154).



Immunohistochemical analysis of paraffin-embedded human skeletal muscle tissue showing cytoplasmic localization using anti-Myoglobin antibody Cat.-No AM06141PU-N with DAB staining.