

Product datasheet for **AM06140PU-N**

ERK2 (MAPK1) Mouse Monoclonal Antibody [Clone ID: 4C11]

Product data:

Product Type:	Primary Antibodies
Clone Name:	4C11
Applications:	IF, IHC, WB
Recommended Dilution:	ELISA: 1/10000. Western Blot: 1/500 - 1/2000. Immunofluorescence: 1/200 - 1/1000. Immunohistochemistry on Paraffin Sections: 1/200 - 1/1000.
Reactivity:	Human, Monkey, Mouse
Host:	Mouse
Isotype:	IgG2a
Clonality:	Monoclonal
Immunogen:	Purified recombinant fragment of Human ERK2 expressed in E. Coli.
Specificity:	Recognizes ERK2
Formulation:	PBS State: Purified State: Liquid purified IgG fraction Preservative: 0.03% Sodium Azide
Conjugation:	Unconjugated
Storage:	Store the antibody undiluted at 2-8°C for one month or (in aliquots) at -20°C for longer. Avoid repeated freezing and thawing.
Stability:	Shelf life: one year from despatch.
Gene Name:	mitogen-activated protein kinase 1
Database Link:	Entrez Gene 5594 Human P28482



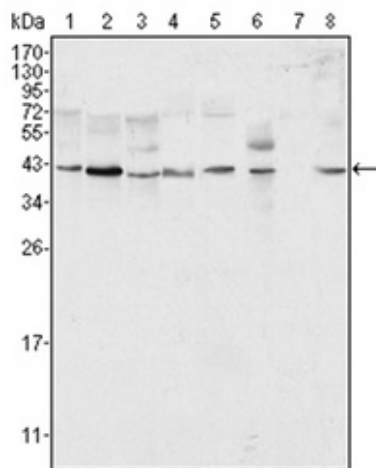
[View online »](#)

Background:

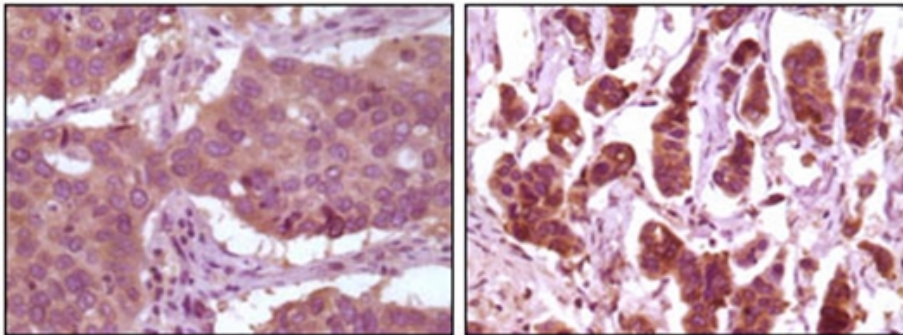
ERK2 (also designated extracellular-signal-related kinase 2 or mitogen-activated protein kinase 1), with 360-amino acid protein (about 40kDa), belongs to the MAP kinase family. MAP kinases act as an integration point for multiple biochemical signals, and are involved in a wide variety of cellular processes such as proliferation, differentiation, transcription regulation and development. The activation of ERK2 requires its phosphorylation by upstream kinases. ERK2 is located in the cytoplasm of resting cells and translocates into the nucleus upon extracellular stimuli by active transport of a dimer. ERK2 is essential for placental development and ERK2 in the trophoblast compartment may be indispensable for the vascularization of the labyrinth.

Synonyms:

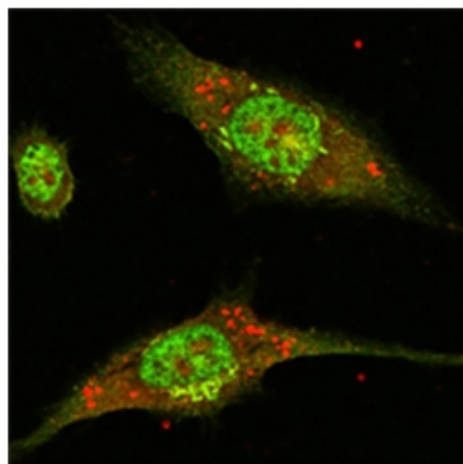
Mitogen-activated protein kinase 1, p42-MAPK, ERT1, PRKM1, PRKM2, MAP kinase 2, MAPK2, MAPK1

Product images:


Western blot analysis using ERK2 antibody Cat.-No AM06140PU-N against Hela (Lane 1), NIH/3T3 (Lane 2), MCF-7 (Lane 3), HEK293 (Lane 4), Jurkat (Lane 5), A549 (Lane 6), NTERA-2 (Lane 7) and SMMC-7721 (Lane 8) cell lysate.



Immunohistochemical analysis of paraffin-embedded human lung carcinoma (left) and breast carcinoma (right) showing cytoplasmic localization using ERK2 antibody Cat.-No AM06140PU-N with DAB staining.



Confocal immunofluorescence analysis of Eca-109 cells using ERK2 antibody Cat.-No AM06140PU-N (green).